

SIGMA TAU DELTA

2009

INTERNATIONAL CONVENTION

REFLECTIONS



meditations
ruminations
contemplations
observations
speculations

REFLECTIONS

Hyatt Regency Minneapolis
Minneapolis, Minnesota
March 25-28, 2009



Sigma Tau Delta, the International English Honor Society, was established in 1924 to confer distinction upon students of the English language and literature in undergraduate, graduate, and professional studies. Through local chapters at colleges in the United States, Europe, and the Caribbean, the Society provides

cultural stimulation on campus and conducts community service projects that foster literacy and all aspects of the discipline of English, including literature, language, and writing. With over 760 active chapters and more than 1,100 faculty sponsors, nearly 8,500 new members are inducted annually. Sigma Tau Delta is a member of the Association of College Honor Societies (ACHS), and the proud sponsor of The National English Honor Society (NEHS). www.english.org



Sigma Kappa Delta, the English Honor Society for two-year colleges, functions much like Sigma Tau Delta. Membership benefits include prestige of membership in a national honor society, eligibility to apply for scholarships and awards, leadership opportunities, and fellowship among members on a local, regional, and national level who share an interest in literature, the English language, and fine arts. Sigma

Kappa Delta has 87 chapters, and annually partners with Sigma Tau Delta to plan and promote the International Convention. www.english2.org



The **National English Honor Society (NEHS)**, founded and endorsed by Sigma Tau Delta, is the only national organization exclusively for high school students and faculty who, in the field of English, merit special recognition for past and current accomplishments. Individual high schools are invited to petition for a local chapter, through which individuals may be inducted into Society membership. Immediate

benefits of affiliation include national recognition, scholarship eligibility, and opportunities for national networking with others who share enthusiasm for, and accomplishment in, the language arts. Since its inception in 2005, NEHS has grown to over 270 chapters and 14,829 members. www.nehs.us

REFLECTIONS

meditations
ruminations
contemplations
observations
speculations



As Lake Itasca in Minnesota is the source of the Mississippi River, the worlds reflected in the waters of the ten thousand (and more) lakes and the many rivers of Minnesota waters are the source for the 2009 convention theme of **Reflections**. On a literal level, **Reflections** can describe the relationship between the sky and the sky-blue waters, and between the natural world and the human-made world. On a figurative level, **Reflections** may bring us to contemplative meditations on the individual and on society often experienced in the presence of natural wonder. Ultimately, **Reflections** will enable us ponder the numerous ways human endeavor and creativity are influenced by the worlds surrounding us.

The name *Minnesota* comes from a Dakota Indian word *minisota* meaning "water that reflects the sky."

Gloria J. Hochstein
2009 Convention Chair

The *Reflections* logo was created by Melissa Miller, Theta Zeta Chapter of Sigma Tau Delta, University of Wisconsin Eau Claire.

STD International Convention 2009: Featured Speakers



Alexandra Fuller

General Session: Thursday, March 26, 8:00 p.m., followed by book signing.

Continuing Conversation with Alexandra Fuller: Friday, March 27, 9:45 a.m.

Born in England, Alexandra Fuller grew up in Rhodesia (now Zimbabwe), Malawi, and Zambia, attended Acadia University in Nova Scotia, and now lives in Wyoming. In *Don't Let's Go to the Dogs Tonight: An African Childhood*, 2001, Fuller describes growing up in Africa amidst political struggles, civil war, turmoil, and loss. *Scribbling the Cat: Travels with an African Soldier* followed in 2004. Recently released is her nonfiction work, *The Legend of Colton H. Bryant*.



Neil Gaiman

General Session: Friday, March 27, 8:00 p.m., followed by book signing.

On Stage Interview of Neil Gaiman: Friday, March 27, 3:00 p.m.

A prolific writer, Neil Gaiman produces poetry, prose, comics, music lyrics, drama, journalism, and film. Born in England, Gaiman now lives near Minneapolis. Gaiman's works have garnered numerous awards, including the 2009 John Newbery Medal Award. Some of Gaiman's works include *Anansi Boys*, *The Wolves in the Walls*, *The Sandman*, *A Study in Emerald*, *Smoke and Mirrors*, *Coraline*, *American Gods*, *Stardust*, *Neverwhere*, and *Good Omens* (with Terry Pratchett).

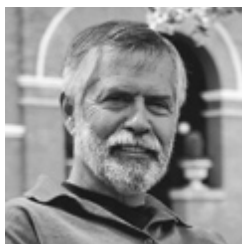


Michael Perry

General Session: Saturday, March 28, 11:00 a.m., followed by book signing.

Continuing Conversation with Mike Perry: Saturday, March 28, 3:00 p.m.

Humorist, writer, musician, Perry is the author of the 2009 Sigma Tau Delta common reader, the bestselling memoir *Population 485: Meeting Your Neighbors One Siren at a Time*, and of numerous essays including the collection *Off Main Street*, and, most recently, *Truck: A Love Story*. Perry got his nursing degree from the University of Wisconsin Eau Claire and has been writing while working as a cowboy, truck driver, proofreader, music roadie, forklift operator, therapy aide, firefighter and EMT. Perry often appears with his band, The Long Beds.



Chris Crutcher

Presentation: Wednesday, March 25, 6:30 p.m, followed by book signing.

Known for such novels as *Staying Fat for Sarah Byrnes*, *Chinese Handcuffs*, and *Deadline*, Chris Crutcher brings his professional career as a therapist and child protection advocate to his writing. Crutcher's blend of comedy and tragedy speaks to his readers with honesty, and Crutcher has been recognized with the National Intellectual Freedom Award from NCTE (1998), the Writers Who Make A Difference Award (2004), and the Margaret A. Edwards Award from ALA (2000). Crutcher's appearance is sponsored by the National English Honor Society, the high school honor society program. Sigma Tau Delta and Sigma Kappa Delta convention attendees are welcome to attend this presentation.

2009 SIGMA TAU DELTA CONVENTION AT A GLANCE

****Name badges must be worn to all sessions.****

Wednesday, March 25

3:00-8:00	Registration	<i>Greenway Promenade</i>
6:30-8:00	Chris Crutcher , sponsored by NEHS	<i>Nicollet A</i>
8:00-8:30	Chris Crutcher Book Signing	<i>Nicollet Promenade</i>
8:30-10:00	<i>The Rectangle</i> Reading	<i>Nicollet A</i>

Thursday, March 26

7:30-6:00	Registration	<i>Greenway Promenade</i>
9:30-11:30	Student Leadership Workshop	<i>Regency</i>
9:30-11:30	Chapter Sponsor Workshop	<i>Regency</i>
11:30-1:00	LUNCH (on your own)	
12:00-9:00	Outstanding Chapter Displays	<i>Greenway Promenade</i>
1:15-2:30	Concurrent Session A	
2:45-4:00	Donna Gregory , NFP Careers	<i>Nicollet A</i>
2:45-4:00	Concurrent Session B	
4:15-5:30	Gary Dop , Reading	<i>Nicollet A</i>
4:15-5:30	Concurrent Session C	
5:45-6:00	Informal Regional & Alumni Caucuses	<i>Nicollet Grand Ballroom</i>
6:00-7:45	DINNER (on your own)	
6:00-7:30	Sigma Kappa Delta Meet & Greet	<i>Spikes (SKD only)</i>
8:00-9:00	Alexandra Fuller , General Session	<i>Nicollet Grand Ballroom</i>
9:00-9:45	Alexandra Fuller Book Signing	<i>Nicollet Grand Ballroom</i>
9:30-11:00	T-Shirt Skits & Bad Poetry Contest	<i>Nicollet A</i>

Friday, March 27

7:30-2:00	Registration	<i>Greenway Promenade</i>
7:30-2:00	Chapter T-Shirt Sales	<i>Greenway Promenade</i>
8:00-9:15	Concurrent Session D	
9:00-9:00	Outstanding Chapter Displays	<i>Greenway Promenade</i>
9:30-10:45	Concurrent Session E	
9:45-10:45	Alexandra Fuller, Continuing Conversation	<i>Nicollet A</i>
11:00-12:15	General Business Session/Caucuses	<i>Nicollet Grand Ballroom</i>
12:15-1:00	LUNCH (on your own)	
12:00	Dr. Linda Kraeger Sigma Kappa Delta Annual Awards Luncheon	<i>Meet in Hyatt Lobby</i>
1:15-2:30	Concurrent Session F	
2:45-4:00	Concurrent Session G	
3:00-4:00	Neil Gaiman, On Stage Interview	<i>Nicollet A</i>
4:15-5:30	Concurrent Session H	
5:30-6:30	President's Reception for Faculty & Alumni	<i>Regency</i>
6:30-7:45	DINNER (on your own)	
8:00-9:00	Neil Gaiman, General Session	<i>Nicollet Grand Ballroom</i>
9:00-9:45	Neil Gaiman Book Signing	<i>Nicollet Grand Ballroom</i>
9:30	Open Microphone	<i>Nicollet A</i>

Saturday, March 28

7:30-2:00	Registration	<i>Greenway Promenade</i>
7:30-2:00	Chapter T-Shirt Sales	<i>Greenway Promenade</i>
8:00-9:15	Concurrent Session J	
9:00-12:00	Outstanding Chapter Displays	<i>Greenway Promenade</i>
9:30-10:45	Gary Dop, Writing Workshop	<i>Nicollet A</i>
9:30-10:45	Concurrent Session K	
11:00-12:00	Michael Perry, General Session	<i>Nicollet Grand Ballroom</i>
12:00-12:45	Michael Perry Book Signing	<i>Nicollet Grand Ballroom</i>
12:45-1:45	LUNCH (on your own)	
1:00-2:00	Sigma Kappa Delta Faculty Sponsor Meeting	<i>Skyway Suite A</i>
2:00-3:15	Concurrent Session L	
3:30-4:45	Michael Perry, Continuing Conversation	<i>Regency</i>
3:30-4:45	Concurrent Session M	
5:15-6:30	Pre-Banquet Mixer & Music (cash bar)	<i>Nicollet Promenade</i>
6:30	Awards Banquet	<i>Nicollet Grand</i>

****Name badges must be worn to all sessions.****

(People without name badges will not be allowed to attend the concurrent sessions or any sessions by guest speakers.)

ARE YOU PRESENTING A PAPER OR CREATIVE WORK AT THE CONVENTION? Please follow these recommendations:

- Do stand at the podium to read your presentation.
- Do observe time limits.
- Don't improvise.
- Do rehearse your talk and mark up the paper for ease of reading.
- Don't wave your hands or fiddle with pen or paper or paper clips.
- Don't use air quotation marks.
- Do smile and enjoy the experience.

ARE YOU MODERATING A SESSION AT THE CONVENTION?

Pick up the packet(s) for your session(s) at the registration table. Each packet contains Guidelines for Moderators, a Session Report Form, and copies of the works being presented in the session assigned to you.

ARE YOU CHAIRING A SESSION AT THE CONVENTION?

Please see the instruction insert in the registration folder, and pick up a Session Report Form for every session you are chairing. The Session Report Forms can be picked up and returned to the registration table.

ROOM NOTES

- All sessions and events will be held on the main level and the second floor.
- The registration table, chapter displays and t-shirt sales will be located in the Greenway Promenade on the second floor.
- The Minnehaha room is located in the area next to the Greenway Promenade behind the escalators.
- Greenway Ballroom: Grwy Blrm
- Please see hotel layout at the end of this program for more information on locations.

Wednesday March 25th

CHRIS CRUTCHER

Wed. 6:30-8:00

Nicollet A

NEHS Sponsored Speaker

Chris Crutcher, author of books such as *Staying Fat for Sarah Byrnes*, *Chinese Handcuffs*, and *Deadline*, has been recognized with several awards for his ability to bring his professional career as a therapist and child protection advocate to his writing. Crutcher speaks to his audience with honesty, blending tragedy and comedy. All convention attendees are welcome.

Chris Crutcher book signing to follow presentation.

RECTANGLE READING

Wed. 8:30-10:00

Nicollet A

Take this opportunity to hear readings from *The Sigma Tau Delta Rectangle*, our annual journal of creative writing that publishes poetry, fiction, and creative non-fiction. Note the call for Submissions for *The Rectangle* and *The Sigma Tau Delta Review* near the back of this booklet.

Thursday March 26th

Student Leadership

Thur. 9:30-11:30

Regency

Workshop: "Through the Looking Glass: Serving to Lead"

Learn from $\Sigma\Delta$'s most successful chapters in two breakout sessions.

Session 1: Service, Fundraising, Publications, Student Leadership

Session 2: Service, Fundraising, Publications, Chapter Management

Chapter Sponsor Workshop **Thur. 9:30-11:30**

Regency

Discuss issues sponsors face, hear from some of $\Sigma\Delta$'s most experienced sponsors, and share your concerns and successes. Breakout sessions offer something for both seasoned and new sponsors.

Session A: Thursday 26 March 1:15-2:30pm

A1. British Literature: *Sir Gawain* Thur. 1:15-2:30 Grwy Blrm A

Moderator: Emily Donnelly, Park University (MO)

Chair: Heidi Zull, University of Dubuque (IA)

Katherine McCarthy, Springfield College (MA): "Temptation: The True Antagonist"

Amanda DiPaolo, Springfield College (MA): "The Search for a Villain"

Samantha Scannell, Slippery Rock University (PA): "Antifeminism in *Sir Gawain and the Green Knight*"

Lorry Gail Cieri, University of Central Oklahoma (OK): "Pagan Conversions in *Sir Gawain and the Green Knight*"

A2. British: Restoration and Romantic Thur. 1:15-2:30 Grwy Blrm B

Moderator: Carrie Fitzpatrick, Alvernia University (PA)

Chair: Rebecca Wisniewski, Alvernia University (PA)

Zoe Triska, St. Edward's University (TX): "Penile Problems in Poetry: Rochester's and Behn's Imperfect Enjoyments"

Ashley Teatum, University of Scranton (PA): "Reflections of Male and Female Homosociality in Farquhar's 'The Recruiting Officer'"

Tara Cloud Clark, Missouri Southern State University (MO): "Eve's Terror: The Subjection of the Female in Mary Shelly's *Frankenstein*"

Emily S. Kahm, Rockhurst University (MO): "Madeline: From Goddess to Ghost"

A3. British Literature: Virginia Woolf Thur. 1:15-2:30 Grwy Blrm C

Moderator: Larry Dennis, Clarion University (PA)

Chair: Sarah B. Williams, University of New Mexico (NM)

Alaina J. Elder, Andrews University (MI): "'Mary Who?': Patriarchal Denial and Feminine Anonymity in *Swann* and *A Room of One's Own*"

Christopher Brown, California Polytechnic State University Pomona (CA): "The Politics of Virginia Woolf's *Mrs. Dalloway*"

Vanna Fuqua, Northwestern Oklahoma State University (OK): "Fantasy and Reality: The Differences between Clarissa Dalloway and Septimus Warren Smith in Virginia Woolf's *Mrs. Dalloway*"

Christopher L. Wike, Clarion University (PA): "Requiems for an Age: *Mrs. Dalloway* and *Elgar's Cello Concerto*"

A4. American Literature: Race and Gender Thur. 1:15-2:30 Grwy Blrm D

Moderator: Delores Stephens, Morehouse College (GA)

Chair: Ashlyn Wells, University of Wisconsin-Eau Claire (WI)

Goldie Swarner, University of Pittsburgh Greensburg (PA): "Rebellion for Entitlement"

Kenton Rambsy, Morehouse College (GA): "Reflections on Frederick Douglass's *The Heroic Slave*"

Kailey Burtnett, University of Pittsburgh Greensburg (PA): "How the Navajo and Oraibi Indian Tribes Value Women"

A5. American Literature: Cultural Thur. 1:15-2:30 Grwy Blrm E

Moderator: Ami Comeford, Dixie State College (UT)

Chair: Hannah Stewart, Wayland Baptist University (TX)

Sarah Yakima, Clarion University (PA): "Defeating Robin Hood: Taking from the Rich and Giving to the Rich in Ayn Rand's *Atlas Shrugged*"

Katherine Wagner, La Sierra University (CA): "Reflecting on Two Worlds: The Poetry of Lawrence Ferlinghetti and Pre-/Post-September 11, 2001"

Cole Schmidt, Northern Michigan University (MI): "The Sky is Falling: Cultural Reflections of 9/11 through Sequential Art "

Dustin Jackson, Dixie State College (UT): "Sinking William Burroughs and Retroactive Robert Rauschenberg: A 'Cut Up' and a Combine Reveal New Meaning to 'America'"

A6. Original Poetry: Voices Thur. 1:15-2:30 Grwy Blrm F

Moderator: Al Kammerer, University of Nebraska Omaha (NE)

Chair: Nathan Zochert, Minot State University (ND)

Derek Fox, West Virginia University (NY): "Search to Find My Own Voice: A Collection of Poems"

Cheryl Jones-Lane, Harris Stowe State (MO): "My Soul's Lamentations"

Natasha Hackett, York College (NE): "Original Poetry for Children"

J.L. Clark, University of Alabama (AL): "'Bethel': A Collection of Poems"

Maria Calcaben, Texas State University (TX): "Three Poems"

Kristina Gabrys, Andrews University (OR): "One Poem"

A7. Creative Nonfiction: Feeling Hungry Thur. 1:15-2:30 Grwy Blrm G

Moderator: Christina Riley Brown, Mercyhurst College (PA)

Chair: Katherine St. Martin, Keene State College (NH)

Katrina Epps, College of Notre Dame (MD): "Personal Essay Entitled Frozen Cups"

Sarah-Hazel Jennings, Mercyhurst College (PA): "What We Mean When We Talk About Food"

Jessica Maratea, Richard Stockton College (NJ): "Cooking Lessons"

Miriam Rowntree, University of North Texas (TX): "The Cheese of Guilt"

Emily Rowley, West Virginia State University (WV): "Mourning Eggs and Evening Toasts"

A8. Original Fiction: Noteworthy Names **Thur. 1:15-2:30** **Grwy Blrm H**

Moderator: Sidney Watson, Oklahoma Baptist University (OK)

Chair: Jessica Slavin, Alvernia University (PA)

Megan Edwards, Thomas More College (KY): “Eleanor”

Micah Dean Hicks, Southern Arkansas University (AR): “The Gospel According to Mark”

Hannah Holmes, Ouachita Baptist University (AR): “Toby”

Emily Summors, Cottey College (MO): “John Has It Comin’”

Hillary Anderson, Oklahoma Baptist University (OK): “Darling, I’m Home”

Stefanie Torres, St. Edward’s University (TX): “The Brains of the Family”

A9. Original Drama: Friends and Enemies **Thur. 1:15-2:30** **Grwy Blrm I**

Moderator: Gwendolyn Morgan, Montana State University Bozeman (MT)

Chair: Kristofer Adam Speirs, Metropolitan State College of Denver (CO)

Paul Mahan, University of Central Oklahoma (OK): “Night of the Living”

Mike Hunter, Fitchburg State College (MA): “Hollow Grasp”

Tim Durant, Metropolitan State College Denver (CO): “Making Apologies”

Jamie Aline Walborn, Alumni Epsilon (CO): “Dolce Vita”

A10. Film: Gender

Thur. 1:15-2:30 **Grwy Blrm J**

Moderator: Susan N. Maher, University of Nebraska Omaha (NE)

Chair: Robert Volpicelli, Ithaca College (NY)

Margaret Fisk, Ithaca College (NY): “‘Ethel I’ve got an Idea:’ Lucy Ricardo Seeks Fulfillment through the Feminine Mystique”

Jeff Heinzl, Furman University Thornhill (SC): “Exposed: Roger Undressing/Redressing in *North by Northwest*”

Taylor Moorman, Montana State University Bozeman (MT): “Trapped: Female Captivity and Male Performance in the Western”

Jason Tonic, College of New Jersey (NJ): “An Examination of the Role and Treatment of Princess Leia in *Star Wars: A New Hope*”

A11. Thinking Academically

Thur. 1:15-2:30 **Skyway A**

Moderator: Sherri Craig, Southeastern Louisiana University (LA)

Chair: Kelly Rohrbach, Alvernia University (PA)

Deborah A. Dessaso, Alumni Epsilon (DC): “Cultural Intelligentsia, Virtual Bohemia, and Academia: Higher Education and the Bridging of the Brows”

Amy S. Brinkley, Lee University (TN): “Left Defenseless: Language and Critical Thinking”

Yolanda Fay Elias, Angelo State University (TX): “Two Sides of the Same Coin: The Victorian Debates Over Education”

A12. Critical Theories**Thur. 1:15-2:30 Skyway B****Moderator:** Stephanie Johnson, Bowie State University (MD)**Chair:** Aaron Pooley, Alma College (MI)

Rebekah Daiss, Armstrong Atlantic State University (GA): "Kate Chopin's 'Desiree's Baby' and the Racial Mask"

Amie Arnoldussen, St. Norbert College (WI): "The Powerless become Powerful in Henry James' *The Turn of the Screw*"

Michael Lowe, Iowa Wesleyan College (IA): "Constituent Gaps in A Happy Death"

Priscilla Marlar, Iowa Wesleyan College (IA): "Shredding the Self: Domestic Space in 'The Yellow Wallpaper'"

A13. Panel:**Thur. 1:15-2:30 Minnehaha****Hosting a High School Literary Conference****Moderator:** Wendy A. Weaver, Mount Mary College (WI)**Panelists:**

Paula Reiter, Mount Mary College (WI)

Claudia Scholl, Mount Mary College (WI)

Talisa Larson, Mount Mary College (WI)

Tammy Tramel, Mount Mary College (WI)

Description:

This panel will outline the process of hosting a high school literary conference such as the Mount Mary College "Literature, Creativity, and Social Justice" conference. Panelists will offer practical advice on securing funding and mailing lists, on making decisions for timelines and presentation arrangements, and on putting details in place by the conference date. Photographs, video recordings, and promotional materials will be shared with Sigma Tau Delta and Sigma Kappa Delta colleagues.

A14. Panel: Return of Spatial Aestheticism: Thur. 1:15-2:30 Mirage Space and Place in Academic Discourse**Moderator:** Linda J. Sumption, Eastern New Mexico University (NM)**Panelists:**

Shannon Lujan, Eastern New Mexico University (NM)

Lisa Ilan, Eastern New Mexico University (NM)

Laura Holder, Eastern New Mexico University (NM)

Description:

The panel will discuss the reemergence of spatial aestheticism, the use of space and place as interpreted by Gaston Bachelard, Yi-Fu Tuan, and Tim Cresswell, its validity as a contemporary theory, and its ability to expand the boundaries of mainstream interpretations of literature.

DONNA GREGORY

Thur. 2:45-4:00

Nicollet A

Alumni Reflections:

Practical Advice for Getting a Job in the Nonprofit Sector

Graduating soon? Not sure what you want to do? Freaking out about paying back your student loans? In the words of Douglas Adams, "DON'T PANIC." Instead, come to this discussion about working in the nonprofit sector. Learn the value of your ΣΤΔ service and how to transfer your ΣΤΔ work to a résumé, receive tips on starting a nonprofit career, and discover the secrets of student loan forgiveness. And don't forget to bring your towel for the space jump.

Session B: Thursday 26 March 2:45-4:00pm

β1. British Literature: Renaissance Poetry Thur. 2:45-4:00 Grwy Blrm A

Moderator: David Woody Wilson, West Virginia State University (WV)

Chair: Katherine A. Wagner, La Sierra University (CA)

Jennifer Emling, St. Vincent College (PA): "Spenser's Bower of Bliss and the Recuperation of Male Power"

Cecilia Bolich, St. Leo University (FL): "Veiled Thoughts: Spenserian Virtue and the Treatment of Una and Sexuality in *The Faerie Queene*"

Angela Whalen, Chatham University (PA): "The Truth of Everything That Grows: Shakespeare's Anxieties Concerning Aging and Beauty in His Sonnets to the Young Man"

Adrianna Radosti, Morningside College (IA): "Shakespeare Strikes Back: The Dark Lady Sonnets as Criticism of Sir Philip Sidney's Stella"

β2. British Literature: Early British Women Thur. 2:45-4:00 Grwy Blrm B

Moderator: Robert Crafton, Slippery Rock University (PA)

Chair: Brittany A. Blake, Westfield State College (MA)

Emily Holden, St. Edward's University (TX): "A Medieval Poem 'Women': Viewing Medieval Women Through the Mouths of Men"

Toya Mary Okonkwo, Midwestern State University (TX): "Role of Women in *The Wife's Lament*"

Angela Rae English, University of Missouri St. Louis (MO): "The Fierce *Protection of Anger*"

Rebecca Miller, Slippery Rock University (PA): "Addressing the Inadequate Assessment of Aphra Behn's *Oroonoko* as an Abolitionist Work"

B3. American Literature: Growing Pains **Thur. 2:45-4:00** **Grwy Blrm C**

Moderator: Jane Wood, Park University (MO)

Chair: Chad Chumley, Iowa Wesleyan College (IA)

Alicia Ann Dallman, Nebraska Wesleyan University (NE): “Persuasive Poop: Practicality and Pithiness in Benjamin Franklin’s *To the Royal Academy of Bruxelles*”

Adenike Orekoya, Park University (MO): “The Chronological Development of the New Nation”

Katherine Freund, University of Wisconsin Eau Claire (WI): “Dressing Black and White Slaves”

B4. American Literature: Cultural Critiques **Thur. 2:45-4:00** **Grwy Blrm D**

Moderator: Tim McNeese, York College (NE)

Chair: Kenton Ramsby, Morehouse College (GA)

Evan Adams, Winthrop University (SC): “A Beautiful Reciprocal Arrangement: Holden Caulfield and Money”

Randi Dockter, Minot State University (ND): “The Evolution of Depression in *Giants of the Earth*”

AnnaMaria Wing, Nazareth College of Rochester (NY): “‘Pure Acetylene Virgin’: Purification in Sylvia Plath’s ‘Fever 103’”

B5. Original Poetry: Voices **Thur. 2:45-4:00** **Grwy Blrm E**

Moderator: Michel Aaij, Auburn University Montgomery (AL)

Chair: Owen E. Romo, North Dakota State University (ND)

Laura Crawford, Fitchburg State (MA): “The Construction”

Meghan Dykema, Western Michigan University (MI): “Laryngitis: Stories of Silence”

Cory W. Lockhart, University of Montevallo (AL): “Epistles to the Estranged”

Lacey Young, Auburn University Montgomery (AL): “Talking with Spoons”

Brandon Ecks, California Polytechnic State University Pomona (CA): “Silhouettes”

Roberto Martinez, Metropolitan State College of Denver (CO): “Throwing Voices”

B6. Original Poetry: Reflections and Place **Thur. 2:45-4:00** **Grwy Blrm F**

Moderator: Laurie MacDiarmid, St. Norbert College (WI)

Chair: Amanda Meyer, Northwest Missouri State University (MO)

Ryan McGinty, Gustavus Adolphus College (MN): “Reflections on Humanity, Nature, and the Bathroom Stall”

Susan Rauch, Texas State University San Marcos (TX): “My Irish Memories Abroad: A Journal of Reflection”

Abby Travis, Gustavus Adolphus College (MN): “America is Asleep”

Magdalynn O’Leary, St. Norbert College (WI): “Wisconsin Dirt”

Cara MacNeil, College of New Jersey (NJ): “Pantoum Collection”

B7. Creative Nonfiction: The Written Word **Thur. 2:45-4:00** **Grwy Blrm G**

Moderator: Laura Rotunno, Pennsylvania State University Altoona (PA)

Chair: Jessica Maratea, Richard Stockton College (NJ)

Ashley Beck, Northwestern College (MN): "How to Grow a Writer"

Nicole Pieri, College of New Jersey (NJ): "Poems are Sounds"

Lindsey Young, Northwestern College (MN): "Define Distressing Please"

Angela Lee and Jessica Schewe, Olivet Nazarene University (IL): "Nude Criticism"

Brittany Frost, Olivet Nazarene University (IL): "For Him"

B8. Creative Nonfiction: Raw **Thur. 2:45-4:00** **Grwy Blrm H**

Moderator: Peter Scholl, Luther College (IA)

Chair: Patricia Jones, University of Missouri Columbia (MO)

Jesse Snavlin, Metropolitan State College of Denver (CO): "Louisville, Kentucky:
Alternatively, a Coming Out Story"

Victoria Brooks, University of Sioux Falls (SD): "Present Company Excluded:
Skinny Women are Evil"

Abigail Chabitnoy, St. Vincent College (PA): "Drunk Peeled Labels: An Intimate
Trap"

Michael Andrews, Assumption College (MA): "Dude...Do I Look Fat?"

Robert Deignan, Western Kentucky University (KY): "Ugly"

B9. Original Fiction: Mystic Fictions **Thur. 2:45-4:00** **Grwy Blrm**

Moderator: Sarah Dangelantonio, Franklin Pierce University (NH)

Chair: Gabrielle Melancon, Franklin Pierce University (NH)

Melanie Clark, Alumni Epsilon (KY): "A Selection from Gemstone"

Parker White, University of Alabama (AL): "Magic Tricks"

Natasha Hackett, York College (NE): "When Unicorns Had Souls"

Van Do, University of Texas Austin (TX): "Mythic Proportions"

Heather Belmonte, McKendree University (IL): "Monkey See, Monkey Do"

Renee E. Wolfhope, Franklin Pierce University (NH): "The Knowledge Bee"

B10. Original Fiction: One Liners **Thur. 2:45-4:00** **Grwy Blrm J**

Moderator: Elizabeth Starr, Westfield State College (MA)

Chair: Tiffany Hutabarat, La Sierra University (CA)

MaryAnn Sleasman, Indiana University of Pennsylvania (PA): "Requiem"

Heather A. Bulis, Westfield State College (MA): "Recharge"

Allison Ritto, Chapman University (CA): "Untitled: Impermanent Title"

Amy Hinson, Texas A&M Corpus Christi (TX): "Attempt"

Josie Sawyer, Furman University (NC): "Obsolete"

Michaela Jordan, Northwest Missouri State University (MO): "Loss"

B11. Critical Theory: Feminism**Thur. 2:45-4:00 Skyway A****Moderator:** Shannin Schroeder, Southern Arkansas University (AR)**Chair:** Christina Huber, University of Wisconsin Eau Claire (WI)

Anthony Malcore, St. Norbert College (WI): “The Androgynous Garden in Steinbeck’s ‘The Chrysanthemums’”

Sarah Morris, Southern Arkansas University (AR): “Walt Disney’s Princesses: A Study of Influence on the Perceptions of Women”

Sarah M. La Rue, Northern Arizona University (AZ): “Bangles and Breasts: Deconstructing Wonder Woman”

Allison Hoefener, College of New Jersey (NJ): “‘The Clarinetist’ by Ruth Fainlight”

B12. Panel: Solving a Literary Mystery**Thur. 2:45-4:00 Mirage****Moderator:** Joan Reeves, SKD, Northeast Alabama Community College (AL)**Panelists:**

Randy Cross, SKD, Calhoun Community College (AL)

Sheila Byrd, SKD, Calhoun Community College (AL)

Jill M. Chadwick, SKD, Calhoun Community College (AL)

Description:

Sigma Kappa Delta’s National Project this year has been to find and to place a historical monument on the grave of 19th Century American writer George Washington Harris. This panel will discuss how our mission was accomplished. Discussion is open to all convention attendees.

GARY DOP**Thur. 4:15-5:30****Nicollet A****Reading**

Gary Dop--poet, playwright, professor, and dad—will entertain and read a selection of his poetry. His poems have appeared in a number of journals, including *New Letters*, *North American Review*, *Poetry Northwest*, *The New York Quarterly*, *Sow's Ear Poetry Review*, *Rattle*, *Agni Online*, *South Dakota Review*, *Cave Wall*, *American Life in Poetry*, among others. From time to time, Dop plays comedian and pops up in a comedy club or at a corporate event. (Note that Dop will also be offering a writing workshop Saturday at 9:30 am.)

Session C: Thursday 26 March 4:15-5:30pm

C1. British Literature: Early British Poetry Thur. 4:15-5:30 Grwy Blrm A

Moderator: Dorothy Robbins, Louisiana Tech University (LA)

Chair: Susan Rauch, Texas State University San Marcos (TX)

Cara MacNeil, College of New Jersey (NJ): "Literary Comparison Between Donne and Phillips"

Stephen Heiner, Rockhurst University (MO): "Blood, Sweat, and Tears: The How-To Manual of George Herbert's 'The Altar'"

Heather Fine, Virginia Tech (VA): "Fallacy of Fire: Crashaw's St. Teresa"

April C. Honaker, Louisiana Tech University (LA): "The Underlying Misogyny of Elizabethan Courtly Poets: A Reading of Sidney's *Astrophil and Stella*"

C2. British Literature: Drama Thur. 4:15-5:30 Grwy Blrm B

Moderator: Elizabeth Starr, Westfield State College (MA)

Chair: Joseph W. Pierce, Franklin Pierce University (NH)

Rachel Klaus, Lamar University (TX): "Judgment Day and Redemption in Shaw's Heartbreak House"

Elise Auvil, Indiana University of Pennsylvania (PA): "Samuel Beckett's Endgame: Decay, Death, or Anti-Creation"

Julie Nociolo, State University of New York Geneseo (NY): "Translating the Past: Friel's Response to Modernity and Nostalgia"

Deidre Stuffer, University of Pittsburgh Greensburg (PA): "The Silence of Rape: The Patriarchal Oppression of Women By Means of Violence within *The Love of the Nightingale*"

C3. American Literature: Hawthorne Thur. 4:15-5:30 Grwy Blrm C

Moderator: Margaret Sherve, Minot State University (ND)

Chair: Christopher Lawton, Franklin Pierce University (NH)

Penelope Ingram, Chapman University (CA): "'To Sympathize with All Dark Affections': Blackness and the 'Other' in 'The Minister's Black Veil'"

Catherine Barnett, Taylor University (IL): "'Thou Man of Clay': Humanity in Hawthorne's 'The Birth-mark'"

Susan Brooks, Minot State University (ND): "A Great Humbug: Hawthorne's Attacks on the Women's Rights Movement of Mid 19th-Century America in *The Blithedale Romance*"

Megan Gilland, Northwest Missouri State University (MO): "Hawthorne's Hester Prynne as Feminist Spokeswoman"

C4. American Literature: Spirituality Thur. 4:15-5:30 Grwy Blrm D

Moderator: Samantha Scott, Fort Hays State University (KS)

Chair: Amanda C. Hosey, University of Montevallo (AL)

Jordan Eisenback, Lee University (TN): "There they stand...they understand me not": O'Neill's Lazarus and Christ as *Ubermensch*"

Shawn Bivin, Western Kentucky University (KY): "The Quest for Unity"

Katharine Van Arsdale, Andrews University (MO): "Nature, Mother, Madonna: Feminist Theology in *The Secret Life of Bees*"

Krista Griffith, University of St. Thomas (MN): "Conflicting Worldview Assumptions"

C5. American Literature: Vonnegut & More Thur. 4:15-5:30 Grwy Blrm E

Moderator: Pam Shaffer, Fort Hays State University (KS)

Chair: Stephanie Hollister, Huntington University (IN)

Laura Ofstad, Gustavus Adolphus College (MN): "*Breakfast of Champions: A Marxist Lens*"

Nathan Reed, Cedarville University (OH): "'So It Goes': A Reassessment of Billy Pilgrim's Relationship to Tralfamadorianism in *Slaughterhouse-Five*"

Alex Witkowski, College of New Jersey (NJ): "Blind, Dead, and Naïve: Vonnegut Laying the Blame for Humanity's Downfall"

Enrico Bruno, College of New Jersey (NJ) "Ghosts in *Love*"

C6. Creative Nonfiction: Observations Thur. 4:15-5:30 Grwy Blrm F

Moderator: Ralph Speer, Northwest Nazarene University (ID)

Chair: Cheryl Jones-Lane, Harris-Stowe State University (MO)

Christine Taylor, Samford University (AL): "Gratitude of a Stranger"

Esther Easley, Harris-Stowe State University (MO): "An Old Lady and a Little Boy"

Shannon McCloskey-Ahmed, University of Central Oklahoma (OK): "Cornrow Braids"

Brandon K. Chism, Oklahoma Christian University (OK): "Small, Dark, and Handsome"

Bailey Thomas, Oklahoma Christian University (OK): "An Afternoon in Hiroshima"

C7. Creative Nonfiction: Times of Our Lives Thur. 4:15-5:30 Grwy Blrm G

Moderator: Al Kammerer, University of Nebraska Omaha (NE)

Chair: Jason Hartman, Pennsylvania State University Altoona (PA)

Mandi Haag, St. Norbert College (WI): "Diary of a College Sophomore"

Sarah Cornelissen, St. Norbert College (WI): "Tear Stained Thoughts"

Devin Marie Garofalo, University of Nebraska Omaha (NE): "Dad is Bipolar, Bipolar is Not Dad"

Josie Sawyer, Furman University (NC): "Losing One to Gain Another"

Megan Darby, University of Nebraska Omaha (NE): "Treasures of Life"

C8. Original Fiction: Folks **Thur. 4:15-5:30** **Grwy Blrm H**

Moderator: Christopher Flynn, St. Edward's University (TX)

Chair: Anika Rohla, Northwestern Oklahoma State University (OK)

Kyle Strohschein, St. Edward's University (TX): "Brothers"

Meredith Harper, University of Alabama (AL): "The Lawn-Chair Balloonist"

Alyssa Logsdon, Northwestern Oklahoma State University (OK): "Gatecrasher"

Phil Redmon, Chapman University (CA): "The Lil Disciple"

C9. Original Fiction: Sensory Appeal **Thur. 4:15-5:30** **Grwy Blrm I**

Moderator: Roger Stanley, Union University (TN)

Chair: Shea Hartmann Hodges, Morningside College (IA)

Kristen Susienka, St. Norbert College (WI): "Cookie"

Leigh Sullan, Olivet Nazarene University (IL): "I'm Dancing, Baby"

Suzanne Sink, Winthrop University (SC): "Chourico and Peppers"

Alison Swety, University of Scranton (PA): "Cranberry Sauce"

C10. Film: Sexuality in Film **Thur. 4:15-5:30** **Grwy Blrm J**

Moderator: William Weiershauser, Iowa Wesleyan College (IA)

Chair: Samantha C. Helmick, Iowa Wesleyan College (IA)

Taylor Boston, Oklahoma Christian University (OK): "Homophobic Anxiety in *The Maltese Falcon*"

Kayla Henderson, Southern Arkansas University (AR): "Adrienne Rich's *Compulsory Heterosexuality and Lesbian Existence* as applied to *Mona Lisa Smile*"

Nicholas Dutro, Ohio Northern University (OH): "We're Here, We're Queer, We're Superheroes"

Ashlie Rae Mixon, Southern Arkansas University (AR): "*Pleasantville* and Issues with Feminism, Sexuality, and Society"

C11. Panel: The Church on Main Street **Thur. 4:15-5:30** **Minnehaha**

Moderator: Benjamin Fischer, Northwest Nazarene University (ID)

Panelists:

Cathy Becker, Northwest Nazarene University (ID)

Hali Cross, Northwest Nazarene University (ID)

Jessica Bobango, Northwest Nazarene University (ID)

Lindsey Bramson, Northwest Nazarene University (ID)

Laurie Burgemeister, Northwest Nazarene University (ID)

Description:

In reaction to Michael Perry's *Population 485* and his earlier work, *Off Main Street*, our panel seeks to discuss attitudes toward the church, as revealed by the author and three earlier writers from the upper Midwest: Garrison Keillor, Sinclair Lewis, and O.E. Rolvaag. It is difficult to imagine any small town in America without a church.

C12. Panel: Service Award Panel

Thur. 4:15-5:30 Mirage

Reading for the Cure

Moderator: Kevin Stemmler, Clarion University (PA)

Panelists:

Amy Miller, Clarion University (PA)

Christopher L. Wike, Clarion University (PA)

Michael Ishman, Clarion University (PA)

Leslie Eibl, Clarion University (PA)

Ashley Urik, Clarion University (PA)

Amanda Kunz, Clarion University (PA)

Description:

Clarion University's Rho Iota chapter will discuss strategies for hosting and planning a READING FOR THE CURE event to benefit breast cancer research. Helpful information will be provided to help chapters who would like to organize READING FOR THE CURE events on other campuses.

C13. World Literature: Global Perspectives Thur. 4:15-5:30 Skyway A

Faculty Moderator: Sidney Watson, Oklahoma Baptist University (OK)

Chair: Megan McDonough, La Sierra University (CA)

Elisabeth Wright, Oklahoma Baptist University (OK): "Pangloss and the Folly of Optimism in Voltaire's *Candide*"

Christy Trotnick, Slippery Rock University (PA): "The Body as a Dangerous Entity in Margaret Atwood's *Alias Grace*"

Aubrey Elizabeth Diethorn, St. Vincent College (PA): "Physical and Power-Driven Lusts: Subversion of Sex/Gender Roles in Cathy Coote's *Innocents*"

Sara Katherine Staheli, Southern Utah University (UT): "Tales from Greek Mythology in Modern Music"

C14. American Literature: 20th Century Thur. 4:15-5:30 Skyway B

Faculty Moderator: Joseph Warren, Andrews University (MI)

Chair: Rebekah Wood, Samford University (AL)

Kate Hoganson, Northwestern College (MN): "Exploring the Fears and Reliability of Jim Burden in Willa Cather's *My Antonia*"

Heather Belmonte, McKendree University (IL): "Laura Hawkins and Cultural Anxiety Concerning Women in the Public Sphere"

Lauren Brandeberry, University of Central Oklahoma (OK): "'A Smouldering Unclean Yellow': The Rhetoric of Design in Perkins Gilman's 'The Yellow Wallpaper'"

Carolyn Coley, Samford University (AL): "Structural Analysis of 'In the Village'"

Caucuses: Thur. 5:45-6:00 Nicollet Grand Blrm
Informal Regional and Alumni Caucuses

Gather informally to address questions concerning SR, ASR, and AR elections.

Sigma Kappa Delta: Thur. 6:00-7:30
Meet and Greet

Members of the English Honor Society for Two-Year Colleges are invited to gather over pizza at Spikes (SKD only.)

ALEXANDRA FULLER Thur. 8:00-9:00 Nicollet Grand Blrm
General Session

In *Don't Let's Go to the Dogs Tonight: An African Childhood*, 2001, Alexandra Fuller describes growing up amidst political struggles, civil war, turmoil, and loss in Rhodesia (now Zimbabwe), Malawi, and Zambia. *Scribbling the Cat: Travels with an African Soldier* followed in 2004. Recently released is her nonfiction work, *The Legend of Colton H Bryant*, set in Wyoming, where Fuller now lives. ***Alexandra Fuller book signing to follow presentation.***

Skits & Bad Poetry Thur. 9:30-11:00 Nicollet A

Show off your chapter's t-shirt design and your dramatic creativity in the traditional Dry T-Shirt Skit Contest. Then join in by reading your bad poetry. Prizes for the best skits and the worst poetry.

Friday March 27th

Session D: Friday 27 March 8:00-9:15 am

D1. British Literature: *Hamlet* Fri. 8:00-9:15 Grwy Blrm A

Moderator: Barbara Holland, Blue Mountain College (MS)

Chair: A.J. King, Louisiana Tech University (LA)

Kristin Bennett, College of New Jersey (NJ): "Hamlet's Concept of Identity"

Christina Teel, Blue Mountain College (MS): "Reflections on a Watery Grave in Shakespeare's *Hamlet*"

Jenna R. Hogan, St. Vincent College (PA): "The Issue of Sin in *Hamlet* and *Macbeth*"

Justin Ferguson, Andrews University (MO): "The Master's Daughter: Electra Ophelia as Doppelganger for Oedipal Hamlet in the 2008 Stratford Presentation of *Hamlet*"

D2. British Literature: Postcolonial Fri. 8:00-9:15 Grwy Blrm B

Moderator: Dorothy Robbins, Louisiana Tech University (LA)

Chair: Jamie King, University of Montevallo (AL)

Joseph A. Koivisto, University of Scranton (PA): "A New Terminology: Castle's Interpretation of the Bildungsroman as a Tool of the Colonial Subject and Boehmer's Theory of Colonized Dependence"

Sonja Palmer, Lee University (TN): "Existential Evolution"

Patrick Love, Western Michigan University (MI): "The Ideological Dialectic in *The Infernal Desire Machines of Doctor Hoffman*"

Dan Kenzie, Western Michigan University (MI): "Cannibalism and Postcoloniality in Angela Carter's *The Infernal Desire Machines of Doctor Hoffman*"

D3. American Literature: Social Comment Fri. 8:00-9:15 Grwy Blrm C

Moderator: Judith Allen-Leventhal, College of Southern Maryland (MD)

Chair: Sawyer Halbrook, Louisiana Tech University (LA)

Jessica Brown, Olivet Nazarene University (IL): "Stephen Crane: More Than a Naturalist"

John Linstrom, Valparaiso University (MI): "A Savage Mountain Man and Clever Irony: Twain's Exploration of Human Nature in *Adventures of Huckleberry Finn*"

Vanessa Nordmark, Minot State University (ND): "The Personification of Land in O.E. Rolvaag's *Giants in the Earth*"

Lydia M. Wanger, Oklahoma Baptist University (OK): "Aiming at Reform: Davis' *Life in the Iron Mills and Crane's Maggie: A Girl of the Streets*"

D4. American Literature: Frost Life Lessons Fri. 8:00-9:15 Grwy Blrm D

Moderator: Kyoko Amano, University of Indianapolis (IN)

Chair: Deidre Stuffer, University of Pittsburgh Greensburg (PA)

David Dumbach, Lincoln University (MO): "Frost Takes The Road Not Taken: An Explication of 'Acquainted With The Night'"

Kendall Lentz, Winthrop University (SC): "Lessons from Silas, Baptiste, and Harold Wilson: The Education of Man in the Poetry of Robert Frost"

Katrina Windon, University of Alabama (AL): "Provision for the Age after Beauty: Celebrity and Robert Frost's 'Provide, Provide'"

Megan Sara, Springfield College (MA): "Miscommunication in Frost's 'Home Burial'"

Hillary Anderson, Oklahoma Baptist University (OK): "Darkness Emerging: The Question of Humanity"

D5. World Literature: Romance Languages Fri. 8:00-9:15 Grwy Blrm E

Moderator: Sherri Craig, Southeastern Louisiana University (LA)

Chair: Audrey Faltin, Northwest Missouri State University (MO)

Katherine Paul, Andrews University (MI): "Out of the Darkness: Masaccio's Expulsion from Paradise"

Sherman R. FitzSimons, Southeastern Louisiana University (LA): "Defining the Gender of Mama Elena"

Emma Mackie, Westfield State College (MA): "Ignorance is Bliss"

Adam Engel, College of New Jersey (NJ): "Searching for the Individual Unicorn: The Accessibility of Ultimate Truth in *The Name of the Rose* and 'The Library of Babel'"

D6. Original Poetry: Life on Edge Fri. 8:00-9:15 Grwy Blrm F

Moderator: Emily Donnelly, Park University (MO)

Chair: Kayla Fultz, Missouri Southern State University (MO)

Micah Dean Hicks, Southern Arkansas University (AR): "On Fall"

Brooke Dockery, Oklahoma Baptist University (OK): "The Fall"

Hayley Burdett, West Virginia University (WV): "Dangers"

Travis Lane Wade, Clarion University (PA): "No Regrets"

Sheila Madonia, Park University (MO): "Dry Drowning"

Brianna Lichtenauer, Baker University (KS): "This is How It Goes"

D7. Original Poetry: Men and Women Fri. 8:00-9:15 Grwy Blrm G

Moderator: Beverly McNeese, York College (NE)

Chair: Amanda Lonsdorf, University of Wisconsin Eau Claire (WI)

Jamie Aline Walborn, Alumni Epsilon (CO): "Ms. Grimm"

Bec Koshak, University of Wisconsin Eau Claire (WI): "Naughty Nursery Rhymes"

Matthew A. Heider, Gustavus Adolphus College (MN): "Ask the Man"

Rebecca McKnight, Western Kentucky University (TN): "People"

Sara Katherine Staheli, Southern Utah University (UT): "Pink and Body: Poems About Females I've Seen, Known, or Imagined"

D8. Creative Nonfiction: Visions in Nature Fri. 8:00-9:15 Grwy Blrm H

Moderator: Brenda Ryan, Northwest Missouri State University (MO)

Chair: Jennifer Ellspermann, Loyola Marymount University (CA)

Emily S. Kahm, Rockhurst University (MO): "Dandelion"

Brett Woods, Baker University (KS): "Summer Dance"

Benjamin Lowery, Western Kentucky University (KY): "Clear Hoses and Sunlight"

Caitlynn Lowe, Huntington University (IN): "Moonshine"

Thomas Rich, Northern Michigan University (MI): "A Hay-Stacker's Tale"

D9. Original Fiction: People**Fri. 8:00-9:15****Grwy Blrm I****Moderator:** Jessica Schreyer, University of Dubuque (IA)**Chair:** Anwar Fairley, Southern Arkansas University (AR)

Joseph James Willis, Southern Utah University (UT): "The Dead Baby Babysitter"

Angela Dahl, California Polytechnic State University Pomona (CA): "The Knight
With The Squirrel"

James Groote, University of Sioux Falls (SD): "You've got a Friend in Me"

Aaron Pooley, Alma College (MI): "Short Story: Son of a Clown"

Trent Gurney, Alumni Epsilon (UT): "When Daddy Comes Home"

Brittany Frost, Olivet Nazarene University (IL): "Incognito"

D10. Original Fiction: Namely**Fri. 8:00-9:15****Grwy Blrm J****Moderator:** Gary Dop, North Central University (MN)**Chair:** Katie Friedman, California State Polytechnic University Pomona (CA)Carolyn Straub, University of San Diego (CA): "Brooks' Maud Martha
Revised"

Greg Stanley, St. Norbert College (WI): "Dear Hannah"

Joseph Raiche, University of South Dakota (SD): "In Memory of Roger Willard"

Kirsten L. Barker, University of Idaho (ID): "Family Tradition"

Cody Kucker, Fitchburg State College (MA): "For A.J. and His, Seeming to Have
Once Been Smiling, Father"

Abby Teigland, North Central University (MN): "Snickers for Skeeg"

D11. Linguistics**Fri. 8:00-9:15****Skyway A****Moderator:** Wendy A. Weaver, Mount Mary College (WI)**Chair:** Jasmine Edwards, Alma College (MI)Kristofer Adam Speirs, Metropolitan State College of Denver (CO): "Don Juan in
Hell: A Glance at Semantics in Translation"

Lindsay Ashton, College of New Jersey (NJ): "The Victory of Militaristic Defeat"

Tammy Tramel, Mount Mary College (WI): "My Tongue is Lashed"

D12. Panel:**Fri. 8:00-9:15****Minnehaha**

Cultural Immersion Experiences for English Education Majors

Moderator: Kelly Sassi, North Dakota State University (ND)**Panelists:**

Jacob Knodel, North Dakota State University (ND)

Laura Odland, North Dakota State University (ND)

Kristin Eitreim, North Dakota State University (ND)

Nicole Dejarlais, North Dakota State University (ND)

Description:

The panel will focus on English Education students' immersion experiences at Como Park and Belcourt High School on the Turtle Mountain Reservation. The immersion experience gives future teachers more diverse experiences than they might have in the Fargo-Moorhead area. For English teachers, who need to be prepared to teach a multicultural curriculum, diverse experiences are especially valuable training for teaching the literature of many cultures. Each speaker will make connections between the immersion experiences and the teaching of English. Topics include immersion experiences in a diverse urban setting vs. rural North Dakota schooling, reflections written pre/post and how they help manage feeling overwhelmed, differences between expectations and experience, suggestions for improvements, and recommendations for how to prepare students for an immersion.

D13. Panel:**Fri. 8:00-9:15****Mirage****From Student to Scholar: The Ugly Duckling Stage****Moderator:** Doris Walters, Missouri Southern State College (MO)**Panelists:**

Katherine A. Wagner, La Sierra University (CA)

Tiffany Hutabarat, La Sierra University (CA)

Stephanie Troyer, La Sierra University (CA)

Megan McDonough, La Sierra University (CA)

Damaris Saenz, La Sierra University (CA)

Description:

Sometime between graduating and stepping foot in the first graduate level class, undergraduates are supposed to undergo a magical transformation from student and scholar. How does one move from being a more passive learner (a student) to a more active learner (a scholar)? This panel, four graduate students and one undergraduate, will offer insights on advancing to the next stages of education, learning, and life. Possible topics of discussion include finding an area of study to devote a career to, coping with no longer fitting in with undergraduates but not quite being a scholar, getting published when you aren't yet an expert, and other related topics. This panel is applicable to graduate students undergoing this transition, undergraduates who will soon be doing so, and all who think the life of a scholar might someday be for them.

D14: Film: Who We Are

Fri. 8:00-9:15 Skyway B

Faculty Moderator: Elisa Beshero-Bondar, Univ. of Pittsburgh Greensburg (PA)

Chair: Joanne Eckert, Northwest Nazarene University (ID)

Joe Mayers, Rockhurst University (MO): "Internationality and Humanity: Martin McDunagh's Violation of Irish Stereotypes *In Bruges*"

Jessica May, Southwestern University (TX): "Shaping Yankee *Hotel Foxtrot*"

Allison Ritto, Chapman University (CA): "The Postcolonial Condition on *Battlestar Galactica*"

Elizabeth Cuenin, Samford University (AL): "Imperialism in American Military: Francis Ford Coppola's *Apocalypse Now*"

ALEXANDRA FULLER

Fri. 9:45-10:45

Nicollet A

Continuing Conversation

Co-Chairs: Sawyer Halbrook, Louisiana Tech University (LA) and Jesse Snavlin, Metropolitan State College of Denver (CO)

An informal presentation by Alexandra Fuller which encourages discussion and questions.

Session E: Friday 27 March 9:30-10:45am

E1. British Literature: Renaissance Women Fri. 9:30-10:45 Grwy Blrm A

Moderator: Mary Pier, Harris-Stowe State University (MO)

Chair: Stephanie Troyer, La Sierra University (CA)

Jeniffer Smith, Blue Mountain College (MS): "The Women of *Richard II*"

Nikki Alimonda, Long Island University (NY): "Woman's Power as a Subversive Force and the Reversal of the Patriarchal Structure in William Shakespeare's *King Lear*"

Samantha Perez, Southeastern Louisiana University (LA): "The Girl that Jack Built: Rosalind and Constructed Gender Binaries in Shakespeare's *As You Like It*"

Ashley N. Keys, University of Central Oklahoma (OK): "*Romeo and Juliet*: Conforming to Patriarchy"

E2. British: Jane Austen

Fri. 9:30-10:45 Grwy Blrm B

Moderator: Kent Chapin Ross, York College (NE)

Chair: Michelle Sarver, University of Pittsburgh Greensburg (PA)

Edmund St. Laurent, Westfield State College (MA): “Jane Austen’s *Sense and Sensibility*: A Novel Reflecting A New Kind of Femininity”

Ashleigh M. Stewart, Cedarville University (OH): “Redefining Gentlemen in Jane Austen’s *Sense and Sensibility*”

Courtney Stoker, Southwestern University (TX): “The East at Home: Orientalism in Jane Austen’s *Mansfield Park*”

Angela Bebb, Oklahoma Christian University (OK): “The Ghost in the Deux Ex Machina: The Conflict of Merit and Reality in *Mansfield Park*”

E3. British Literature: Irish Voices

Fri. 9:30-10:45 Grwy Blrm C

Moderator: Judith Allen-Leventhal, College of Southern Maryland (MD)

Chair: Launea DeAnna Ellis, Columbia College (SC)

Caitlin Murphree, Samford University (AL): “The Revelation of Distant Music”

William Braun, Huntington University (IN): “The Smelting of Faeryland: ‘The Man Who Dreamed of Faeryland’ and Yeats’ Process of Revision”

Megan LoBue, University of Scranton (PA): “Vincent J. Cheng, ‘Empire and Patriarchy in [Joyce’s] *The Dead*’: A Critical Reading”

Alison Swety, University of Scranton (PA): “The Paralysis of Gender and Silence in James Joyce’s ‘A Mother’: A Response to Jane Miller’s Reading of Mrs. Kearney”

E4. American Literature: Toni Morrison

Fri. 9:30-10:45 Grwy Blrm D

Moderator: Dana Aspinall, Alma College (MI)

Chair: Sarah G. Lindesmith, Alma College (MI)

Faina Polt, Alma College (MI): “A Woman Walked Out of the Water: Memory Speaks in *Beloved*”

Kristen Rinehart, Winthrop University (SC): “Masculine Identity and Narrative Structure in Toni Morrison’s *Song of Solomon*”

Samantha Cortez Selman, Salem College (NC) “Escaping the Plantation: Unraveling Morrison’s Weaving of Myth”

Jessica Bonner, Samford University (AL): “Escape to the Ideal World: An Analysis of Toni Morrison’s *The Bluest Eye*”

E5. Original Poetry: Earthly Images **Fri. 9:30-10:45** **Grwy Blrm E**

Moderator: Jane Wood, Park University (MO)

Chair: Amanda Lonsdorf, University of Wisconsin Eau Claire (WI)

Kristen Grevesen, College of New Jersey (NJ): "Rain"

Chelsea Lane Campbell, Southern Utah University (UT): "Wearing Rain Boots in the Desert"

Landon Gray Mitchell, Southern Utah University (UT): "Roots, Leaves"

Jessica Rose Boll, University of Rio Grande (OH): "I Am the Queen of the Seasons"

Melanie Clark, Alumni Epsilon (KY): "Garden Poems"

Jillian M. Phillips, University of Wisconsin Eau Claire (WI): "Reflections Made in Nature: A Pastoral Memoir"

E6. Original Poetry: Changes **Fri. 9:30-10:45** **Grwy Blrm F**

Moderator: Doris Walters, Missouri Southern State College (MO)

Chair: Rebecca Diehl, Pennsylvania State University Altoona (PA)

Abigail Chabitnoy, St. Vincent College (PA): "A Creative Act"

Lauren Bieler, Elon University (NC): "To Feel Something More"

Amber Noel, Lee University (TN): "Transformations"

Nicole Pieri, College of New Jersey (NJ): "Things Being Born"

Ashley Menchise, College of New Jersey (NJ): "Transgenics"

Jason Tonicic, College of New Jersey (NJ): "Rebuilding Romans"

E7. Original Fiction: Natural Wonders **Fri. 9:30-10:45** **Grwy Blrm G**

Moderator: Brenda Thomas, LaGrange College (GA)

Chair: Renee E. Wolfhope, Franklin Pierce University (NH)

William G. Korver, Oklahoma Baptist University (OK): "The Expanse"

G. Ryan Spain, University of Alabama (MI): "The Acholiland"

Rachel Usasz-Keber, University of Nebraska Kearney (NE): "The Missing Stone"

Christopher Lawton, Franklin Pierce University (NH): "Howl into a Silent Night"

Jennifer Kiefer, Western Kentucky University (KY): "Solstice"

Eleanor M. Ramlow, Alma College (MI): "Natural Consequences"

E8. Original Fiction: Sound Off **Fri. 9:30-10:45** **Grwy Blrm H**

Moderator: Linda J. Sumption, Eastern New Mexico University (NM)

Chair: Naomi Fosher, Plymouth State University (NH)

Jenna Johnson, Valparaiso University (IN): "Falling Nickels"

Shaughnessy Conley, Metropolitan State College of Denver (CO): "A Slowly Fading Sound"

John P. Bourgeois, Louisiana Tech University (LA): "For Whom Does the Bell Toll?"

Kathryn M. Botsford, St. Norbert College (WI): "The Drill"

Callie Katsounakis, Westfield State College (MA): "The Last Word"

Meaghan Brennan, Westfield State College (MA): "Seeds Scattered"

E9. Film: Critiques of Technique & Style Fri. 9:30-10:45 Grwy Blrm I

Moderator: Delores Stephens, Morehouse College (GA)

Chair: Sean Cullen, Alvernia University (PA)

Kelly Retz, Alumni Epsilon (MN): "Filming the *Kaleidoscope*: Robert Altman's Mosaic Sense of Style"

Michael Ishman, Clarion University (PA): "The Use of Film Techniques in *The Visitor*"

Kelliann Blazek, University of Wisconsin La Crosse (WI): "*Dancer in the Dark*: Defining or Defying Genre?"

Sarah Moore, Fairmont State University (WV): "Mississippi Burning: An Educational Film?"

E10. Critical Theory: Formalism et al. Fri. 9:30-10:45 Grwy Blrm J

Moderator: David Woody Wilson, West Virginia State University (WV)

Chair: Jessica Slavin, Alvernia University (PA)

Jenny W. Lau, Chapman University (CA): "The Choice That Hurston Gives Her Readers"

Tamara Moellenberg, Azusa Pacific University (CA): "The Same from Many Sides: Husserlian Intersubjectivity and Faulkner's Use of Multiple Narrators in *As I Lay Dying*"

Ashley DeArmond, Olivet Nazarene University (IL): "Textual Comparison of Enuma Elish in *Genesis 1*"

Corey D. Clawson, Utah State University (UT): "Body and Allegory in J.M. Coetzee's *Waiting for the Barbarians* and *Age of Iron*"

E11. Panel: Where Do We Go From Here? Fri. 9:30-10:45 Minnehaha
The Changing Dynamic of the African American Community during the Obama Presidency.

Moderator: Stephanie Johnson, Bowie State University (MD)

Panelists:

Jasmine Harris, Bowie State University (MD)

Niccole Hill, Bowie State University (MD)

Sharday Melton, Bowie State University (MD)

Description:

Panelists will discuss the position expressed by journalist Jonetta Rose Barras a few days after the election which made Barack Obama the first African American president of the United States. Panelists will begin with brief presentations and then invite discussion on the following topics: Have we begun a post-racial era in America? How can the African American community continue to address key issues that persist despite the optimism Obama's election has brought? And who is the "New Negro" of 2008?

E12. Creative Nonfiction: Adventure Fri. 9:30-10:45 Skyway A

Moderator: Diana Scholl, Luther College (IA)

Chair: Melissa Masone, Alvernia University (PA)

Heidi Graser Thulin, Northwestern College (MN): "A Plane Ticket and a Three Hour Drive"

Paul Utterback, St. Norbert College (WI): "Afraid to Fly"

Joseph Raiche, University of South Dakota (SD): "Airplanes, Pocket Knives, and Well Dressed Gypsies"

Linnea Graffunder, Luther College (IA): "A Hot Cup of Crime—Hold the Sugar—To Go, Please"

Audra M. Gaddis, Iowa Wesleyan College (IA): "Doomsday"

BUSINESS MEETING Fri. 11:00-12:15 Nicollet Grand Blrm

General Business Meeting & Caucuses

Chair: William C. Johnson, Executive Director, Sigma Tau Delta

Following the general business meeting, the Regional & Alumni Caucuses will meet to elect Representatives and Associate Student Representatives.

Midwestern Regional Caucus	Nicollet Grand Blrm
Eastern Regional Caucus	Nicollet A
Southern Regional Caucus	Regency
Southwestern Regional Caucus	Greenway Ballroom J
High Plains Regional Caucus	Greenway Ballroom I
Far Western Regional Caucus	Greenway Ballroom G
Alumni Caucus	Greenway Ballroom F

Chapters sending a voting delegate to the Business Meeting AND their regional caucus will receive a \$200 reimbursement (\$400 for chapters located outside the continental U.S.). The voting delegate must fill out the form handed out in the Business Meeting and must turn in that form during their regional caucus to be eligible for the delegate reimbursement. Forms will not be accepted after the caucus is over.

Sigma Kappa Delta Fri. 12:00 Meet in Hyatt Lobby

Dr. Linda Kraeger Annual Awards Luncheon

This luncheon is for members of Sigma Kappa Delta, the National English Honor Society for two-year colleges. This awards luncheon is named in honor of the late Dr. Linda Kraeger, past president of SKD.

Session F: Friday 27 March 1:15-2:30 pm

F1. Telling Your Lies (Oops!) Life: Presentation on The Art of the Memoir Fri. 1:15-2:30 Grwy Blrm A

Moderator:

Sheila Byrd, SKD, Calhoun Community College (AL)

Speaker:

Randy Cross, SKD, Calhoun Community College (AL)

Description:

Dr. Randy Cross is a much in-demand speaker throughout the South. A natural comedian and storyteller, he will share with students the ways to turn our lives into memoir. All convention attendees are invited.

F2. British Literature: Shakespeare Fri. 1:15-2:30 Grwy Blrm B

Moderator: Alcyone Scott, Midland Lutheran College (NE)

Chair: Jaimie Robeson, Park University (MO)

Amanda Woods, Lincoln University (MO): "Exposure: Humanity in the Nude in *Macbeth*"

Jessica Anita Graves, Alumni Epsilon (SC): "Art Thou a Man: *Macbeth* and Gender Manipulation"

John Conrad Schulze, University of Nebraska Lincoln (MO): "Fruit of the Loom: Threads of Fate in Shakespeare's *Macbeth*"

Michal Roberson, Blue Mountain College (MS): "The Reality of Henry and Katherine"

F3. American Literature: Women's Voices Fri. 1:15-2:30 Grwy Blrm C

Moderator: Margaret Sherve, Minot State University (ND)

Chair: Hannah Mills, Northern Illinois University (IL)

Meghan Engsberg, St. Norbert College (WI): "American Women in Rowson's *Charlotte Temple*: Feminist Implications of the MiddleClass"

Kimberly Anderson, St. Norbert College (WI): "Charlotte Temple's Fall from Grace: A Painful Lesson about Inaction"

Susan Odabasi, St. Norbert College (WI): "Mourning Human Imperfection: Impulse and Virtue in Susanna Rowson's *Charlotte Temple*"

Gina Hodnik, Northern Illinois University (IL): "Archetypal Figures in Kate Chopin's *Désirée's Baby*"

F4. American Literature: Classics **Fri. 1:15-2:30** **Grwy Blrm D**

Moderator: Jessica Schreyer, University of Dubuque (IA)

Chair: Amelia Brandt, Park University (MO)

Brooke Dockery, Oklahoma Baptist University (OK): "F. Scott Fitzgerald: An 'Ignorant Genius'"

Evan Gribbins, Western Kentucky University (KY): "Time and *The Sound and the Fury*"

Holly Shelton, Park University (MO): "Origin of Morality in *The Sun Also Rises*"

F5. World Literature: Asian **Fri. 1:15-2:30** **Grwy Blrm E**

Moderator: Peter Scholl, Luther College (IA)

Chair: Kristin Chang, University of Wisconsin Eau Claire (WI)

Weiling Lai, Park University (MO): "Love Creates Conflicts between Chinese and American-Chinese Women"

Van Do, University of Texas Austin (TX): "The Role of Violence in lê thi diem thúy's *The Gangster We Are All Looking For*"

Marcy Colalillo, Fitchburg State College (MA): "Buddhist Principles in Noh Theater"

Kathryn M. Botsford, St. Norbert College (WI): "The Power of Words: Perceptions of Culture in 'Syntax'"

F6. Original Poetry: The Natural World **Fri. 1:15-2:30** **Grwy Blrm F**

Moderator: Diane Steinberg, College of New Jersey (NJ)

Chair: Faina Polt, Alma College (MI)

Andrew Todd, Thomas More College (KY): "'The Cosmological Cycle' and Other Poems"

Matt Randall, Alumni Epsilon (OK): "Original Poetry, French, and Leaping Frogs"

Jasmine Edwards, Alma College (MI): "Forbidden Nature"

Kristina Brooks, Alumni Epsilon (OK): "Translating Moonbeams and Other Nightly Occurrences"

Thomas Rich, Northern Michigan University (MI): "Song of the North"

Adam Engel, College of New Jersey (NJ): "The Size of the Moon is a Lie"

F7. Original Poetry: Lives in Verse **Fri. 1:15-2:30** **Grwy Blrm G**

Moderator: Diana Scholl, Luther College (IA)

Chair: Carmon Camp, Harris-Stowe State University (MO)

Elizabeth Blumer, Indiana University of Pennsylvania (PA): "A Year in the Life"

Kelly-Anne Polidoro, Springfield College (MA): "Facets of My Life"

Ariel E. Bealer, Ouachita Baptist University (AR): "Living the Life of a Soldier's Wife"

Joseph Nelis, Indiana University of Pennsylvania (PA): "Reflections of an Escapist"

Laura Soldan, Lincoln University (MO): "In Life In Reading"

Rebecca Miller, Slippery Rock University (PA): "Reflections on Sanity Written from a Padded Room"

F8. Original Fiction: Locations **Fri. 1:15-2:30** **Grwy Blrm H**

Moderator: Tim McNeese, York College (NE)

Chair: Lauren Tiner, Plymouth State University (NH)

Sarah Stoutzenberger, York College (NE): "The New House"

Shea Hartmann Hodges, Morningside College (IA): "The Dairy"

Mallory Carter, Plymouth State University (NH): "The House"

Nicole Bartley, Slippery Rock University (PA): "Incident at a Pedestrian Bridge"

George Fillinger, California Polytechnic State University Pomona (CA): "The Town of Talmon"

Danielle M. LeFevre, Chapman University (CA): "The Mars Sky"

F9. Original Fiction: Dark and Dreary **Fri. 1:15-2:30** **Grwy Blrm I**

Moderator: Shannon Schroeder, Southern Arkansas University (AR)

Chair: Stephanie Schiefelbein, University of Wisconsin Eau Claire (WI)

Christian McPhate, Midwestern State University (TX): "Tragedy"

Nathaniel Fleckenstein, Northern Kentucky University (IN): "Black Envelope"

Bec Koshak, University of Wisconsin Eau Claire (WI): "Dodging a Bullet"

Damon McKinney, Southern Arkansas University (AR): "Dogs of War"

Lacey Young, Auburn University Montgomery (AL): "Careen"

F10. Creative Nonfiction: World Cultures **Fri. 1:15-2:30** **Grwy Blrm J**

Moderator: Kelly Sassi, North Dakota State University (ND)

Chair: Audra M. Gaddis, Iowa Wesleyan College (IA)

Katie Anderson, Gustavus Adolphus College (MN): "The Foreign Policy of Egyptian Rat Screw"

Samantha C. Helmick, Iowa Wesleyan College (IA): "Hurricane Katrina: America's Raft of Medusa"

Catherine Barnett, Taylor University (IL): "Katika Kenya: Musings of a Fourth Culture Kid"

Eva Marie Guerrero, Texas A&M University (TX): "La Pinata, the Great Equalizer"

Toya Mary Okonkwo, Midwestern State University (TX): "My Parents: From Honduras, Nigeria, and Wichita Falls, Texas"

F11. Creative Nonfiction: Life Struggles **Fri. 1:15-2:30** **Skyway A**

Moderator: Sarah Dangelantonio, Franklin Pierce University (NH)

Chair: Ashley J. Brossart, Minot State University (ND)

Andrea Jones, Northwestern Missouri State University (MO): "Through the Windshield"

Megan Gilland, Northwestern Missouri State University (MO): "Accidentally Young"

Renee E. Wolfhope, Franklin Pierce University (NH): "Sophia"

Danielle White, Franklin Pierce University (MA): "February 14, 2008"

Louisa Soli-Holt, Augustana College (SD): "Cancer Sucks"

F12. Panel:**Fri. 1:15-2:30****Minnehaha****Reflections on Campus and Community Service Projects****Moderator:** Carrie Fitzpatrick, Alvernia University (PA)**Panelists:**

Sarah Heckman, Alvernia University (PA)

Aida Garman, Alvernia University (PA)

Amy Miller, Clarion University (PA)

Brittany Sims, Hampton University (VA)

Azania Jenkins, Hampton University (VA)

Crystal Baker, Southern Arkansas University (AR)

Description:

Panelists will discuss the creative planning and implementation of various service-oriented projects designed to meet campus and community needs. Topics will include civic engagement, event planning, personal and social responsibility, project development, student leadership, and volunteerism.

F13. Teaching**Fri. 1:15-2:30****Mirage****Moderator:** Brenda Ryan, Northwest Missouri State University (MO)**Chair:** Patricia Jones, University of Missouri Columbia (MO)

Lauren Paddick, St. Vincent College (PA): “‘I said No’: Censorship and Young Adult Literature in Schools”

Tim Durant, Metropolitan State College Denver (CO): “Gay and Lesbian Literature: Bridging the Gap”

Jenny Rowe, Ohio Northern University (OH): “Resurrecting a Writer: Bromfield with Fitzgerald in Ohio Language Arts”

Rachel Horton, Texas Wesleyan University (TX): “The Inexhaustible Voice of the Personal Essay”

NEIL GAIMAN**Fri. 3:00-4:00pm****Nicollet A****On Stage Interview****Interviewers:** Kevin Stemmler, Clarion University (PA) and John Pennington, St. Norbert College (WI)**Co-Chairs:** Hannah Stewart, Wayland Baptist University (TX) and Sara Staheli, Southern Utah University (UT)

Tonight’s featured speaker, writer Neil Gaiman, will answer questions posed by the interviewers who will also accept written questions from audience members.

Session G: Friday 27 March 2:45-4:00pm

G1. British Literature: Early Influences Fri. 2:45-4:00 Grwy Blrm A

Moderator: Leslie A. Crabtree, North Central University (MN)

Chair: Ashlie Rae Mixon, Southern Arkansas University (AR)

Aspen Amanda Hougen, Montana State University (MT): "Robin Hood is Here Again: Anglo-Saxon, Celtic, and Norman Influences in the Robin Hood Ballads"

Grant Campbell, University of Nebraska Kearney (NE): "The Figure of the Wanderer in British Literature"

Steve Kluge, University of Central Oklahoma (OK): "Chaucer's *The Pardoner's Tale*: An Old Reflection"

Jesse Huggins, Blue Mountain College (MS): "Faith and Function: Theology in *The Pilgrim's Progress*"

G2. British: Jane Austen Fri. 2:45-4:00 Grwy Blrm B

Moderator: Richard Ruppel, Chapman University (CA)

Chair: Ashlyn Wells, University of Wisconsin Eau Claire (WI)

Megan Kathleen Clift, University of San Diego (CA): "Love and Legality: Austen's Marriages"

Sarah Chenoweth, Pittsburg State University (KS): "*Pride and Prejudice*: Voyeurism and Exhibition"

Roy Rhodes, Oklahoma Christian University (OK): "Sexual Politics and Authorial Power in Austen's *Emma*"

G3. British: Romantic Poets Fri. 2:45-4:00 Grwy Blrm C

Moderator: Kent Chapin Ross, York College (NE)

Chair: William D. Tripp, Southern Arkansas University (AR)

Tami Russo, Park University (MO): "Writing Under the Influence: Opium and the Romantic Poets"

Megan Darby, University of Nebraska Omaha (NE): "Blindness and Vision: Nature as a Vehicle for Sensibility in the Elegiac Sonnets"

Devin Marie Garofalo, University of Nebraska Omaha (NE): "Burke's Paradox: The Sublime Feminine of the Chivalric Aristocracy"

Jody Kolter, St. Norbert College (WI): "William Blake's *The Marriage of Heaven and Hell*: A Counterintuitive Approach to Unifying Contraries"

G4. American Literature: Connections Fri. 2:45-4:00 Grwy Blrm D

Moderator: Pam Shaffer, Fort Hays State University (KS)

Chair: Laurie Burgemeister, Northwest Nazarene University (ID)

Ben Rawlins, Oklahoma Christian University (KS): "The Music of Connection and Individualism in Baldwin's 'Sonny's Blues'"

Meredith Musil, Fort Hays State University (KS): "Racial and Sexual Bias in the Writings of Nella Larsen and Zora Neale Hurston"

Susan Clewell, Ohio Northern University (OH): "The Mechanics of Character"

Mary Lamb, Azusa Pacific University (CA): "Water in Literature: An Analysis of Nature's Finest Element Through the Eyes of Edna Pontellier and the Tyrone Family"

G5. American Literature: Feminist Studies Fri. 2:45-4:00 Grwy Blrm E

Moderator: Mary Pier, Harris-Stowe State University (MO)

Chair: Sarah Yakima, Clarion University (PA)

Matt Bougie, St. Norbert College (WI): "Diminishing Feminism in Edith Wharton's *The House of Mirth*"

Caley Crull, Winthrop University (SC): "What Can You Expect of A Girl Who Was Allowed To Wear Black Satin at Her Coming-Out Ball? Gender Issues in Wharton's *The Age of Innocence*"

Erica M. Powell, Slippery Rock University (PA): "Reacting Against American Patriarchy: Sexuality and the Supernatural in Laurell K. Hamilton's *Anita Blake Series*"

Elizabeth Pippin, Cottey College (MO): "Ladies of the Evening"

G6. World Literature: 20th Century Fri. 2:45-4:00 Grwy Blrm F

Moderator: Carolyn Ayers, St. Mary's University (MN)

Chair: Justine Berry, Plymouth State University (NH)

Julia Jergenson, St. Mary's University of Minnesota (MN): "Death of A Traveling Salesman: An Exploration of Marxism and the Bourgeois Lifestyle in Kafka's *The Metamorphosis*"

Jennifer Clarke Lamar, University of Beaumont (TX): "Abandoning Human: The Proliferation of Indifference in Kafka's *The Trial*"

Joel Thomas, Olivet Nazarene University (IL): "Who is Woland?"

Anika Rohla, Northwestern Oklahoma State University (OK): "Modern Ancient Heroes"

G7. World Literature: Seamus Heaney Fri. 2:45-4:00 Grwy Blrm G

Moderator: Sheri Midkiff, William Baptist College (AR)

Chair: Katherine St. Martin, Keene State College (NH)

Allison Julia Mouret, St. Edward's University (TX): "A Contrast of William B. Yeats and Seamus Heaney"

Lauren Bieler, Elon University (NC): "Seamus Heaney: The New Naturalist"

Trenton B. Olsen, Utah State University (UT): "Seamus Heaney and the Poetry of Parenthood"

G8. Original Poetry: Visual Images **Fri. 2:45-4:00** **Grwy Blrm H**

Moderator: Beverly McNeese, York College (NE)

Chair: Kathleen Napolitano, College of New Jersey (NJ)

Daniel Robert Baker, Azusa Pacific (CA): "My Chest Will Sprout Orange Juice"

Paul Mitchell, University of Oklahoma (OK): "Navigating Spaces"

Ashley Sims, Baker University (KS): "Beneath the Floorboards"

Phillip Craig Ratliff, Pikeville College (KY): "'Chestnuts' 'Sockball' (from Steep-Gut)"

Anna Bedsole, Samford University (AL): "Ginger Ice"

G9. Original Fiction: Ideas & Places **Fri. 2:45-4:00** **Grwy Blrm I**

Moderator: Barbara Holland, Blue Mountain College (MS)

Chair: Bridgetta Jasmine Parker, Pennsylvania State University Altoona (PA)

John Ladd, Mercyhurst College (PA): "Rooftop Philosophies"

Michael Prince, Metropolitan State College of Denver (CO): "Room for Thought"

Evan Gribbins, Western Kentucky University (KY): "Small Town Event"

Christopher P. Brown, Pennsylvania State University Altoona (PA): "Deposition
No.12,539 . . . Or While Sitting Through Another Grammar Class"

Casey Cappleman, Blue Mountain College (MS): "The Wild Country"

Rachel Dunnahoe, Ouachita Baptist University (AR): "God Bless America"

G10. Creative Nonfiction: Family Matters **Fri. 2:45-4:00** **Grwy Blrm J**

Moderator: Laura Rotunno, Pennsylvania State University Altoona (PA)

Chair: Brittany A. Blake, Westfield State College (MA)

Marjorie Laydon, Penn State Altoona (PA): "So Far From Home, So Far From
Everything, My Father and I"

Amanda Beck, Westfield State College (MA): "A Grandfather's Pride"

Alicia Ann Dallman, Nebraska Wesleyan University (NE): "The Overall Dream:
Grandpa Over All"

Michelle do Vale, Westfield State College (MA): "Who Am I From?"

Sarah Grim, Indiana University of Pennsylvania (PA): "The Defining Moments"

G11. Critical Theory: Postcolonial Theory **Fri. 2:45-4:00** **Skyway A**

Moderator: John Laflin, Dakota State University (SD)

Chair: Sarah Morris, Southern Arkansas University (AR)

Girwan Khadka, Southern Arkansas University (AR): "The Colony Speaks!"

Julianne E. Sandberg, Alumni Epsilon (OH): "The Oppression of National
Consciousness: Post-Colonial Criticism of Alice Walker's 'Everyday
Use'"

Elizabeth Moody, College of New Jersey (NJ): "'You are Probably Wondering
About Me. I Don't Blame You.' The Politics of Narration in Timothy
Mo's *Redundancy of Courage*"

G12. Panel: The Way We View Women: Sex, Subtitles, and Chainsaws **Fri. 2:45-4:00** **Minnehaha**

Moderator: Christopher Flynn, St. Edward's University (TX)

Panelists:

Sarah La Rue, Northern Arizona University (AZ)

Angela Rae English, University of Missouri St. Louis (MO)

C. Joe Willis, Alumni Epsilon

Description:

The panelists will be analyzing the roles of women as depicted in the visual narrative arena vis-à-vis the genres of horror and action film. The audience will be invited to participate in an intellectually honest examination of the powerful influence the visual narrative has in shaping our understanding of femininity and its impact on feminist criticism. Audience members are requested to arrive eager to engage in a dynamic discussion and consider the various other genres of visual narratives and texts that have influenced our paradigms of the terms *feminine* and *feminism*.

G13. Panel: The Death of Paper **Fri. 2:45-4:00** **Mirage**

Moderator: Beth DeMeo, Alvernia University (PA)

Panelists:

Melissa Masone, Alvernia University (PA)

Lauren Rocchino, Alvernia University (PA)

Kelly Rohrbach, Alvernia University (PA)

Laura Heffner, Alvernia University (PA)

Sarah Heckman, Alvernia University (PA)

Description:

When a major newspaper goes entirely digital, when hundreds of individual bloggers claim the same authority as print journalists, when the public increasingly selects news media that reflect on its own views rather than a broader perspective, when books are available on tape and online--Have we seen the end of print, and is this good or bad? What is the impact of online books on our college bookstores? Panelists will explore these and other questions about the new media and its implications.

Session H: Friday 27 March 4:15-5:30 pm

H1. British: Donne, Herbert, Milton Fri. 4:15-5:30 Grwy Blrm A

Moderator: Summer Dickinson, York College (NE)

Chair: Aida Garman, Alvernia University (PA)

Sarah G. Lindesmith, Alma College (MI): "To Conquer or To Embrace? Views of Death in Donne's 'Death Be Not Proud' and Herbert's 'Death'"

Lauren Coleman, Louisiana Tech University (LA): "Trouble in Paradise: Postlapsarian Sexuality and Ominous Myth in Milton's *Paradise Lost*"

Carolyn Straub, University of San Diego (CA): "Terror, Morality, and Milton's Samson Agonistes"

Jennifer Putnam, LaGrange College (GA): "Psychology of Satan"

H2. British: Paradoxes & Victorian Women Fri. 4:15-5:30 Grwy Blrm B

Moderator: Beth DeMeo, Alvernia University (PA)

Chair: Kayla Henderson, Southern Arkansas University (AR)

Tiffany Hutabarat, La Sierra University (CA): "Shattered Mirrors: Or Why Wilkie Collins' Independent Women Aren't Always What They're Cracked Up To Be"

Jennifer Veilleux, Western Carolina University (NC): "Dear Jane, Keep Yourself from Idols"

Debrenee Adkisson, Kansas State University (KS): "Reinforcing Gender Norms: Miss Havisham's Disconnect Between Motive and Action in *Great*"

Stella Mimidas, College of New Jersey (NJ): "'Poor Shameful Jenny, Full of Grace': The Dynamics of Opposition in Rossetti's 'Jenny'"

H3. World Literatures Fri. 4:15-5:30 Grwy Blrm C

Moderator: Samantha Scott, Fort Hays State University (KS)

Chair: Lauren Beauchamp, Alvernia University (PA)

Hayley Burdett, West Virginia University (WV): "Male Patriarchy and Dangerous Women: The Cultural Influence on the Role of Women in Russian Fairytales and Folk Belief"

Kenneth Lota, Tulane University (LA): "'That's All Folks': Cartoons in *The Moor's Last Sigh*"

Ashley Urik, Clarion University (PA): "Hostile on the Outside"

Alexandra Walston, Fort Hays State University (KS): "Riches to Rags: Dr. Jekyll's Lower Class Transformation"

H4. American Literature: Conflicts **Fri. 4:15-5:30** **Grwy Blrm D**

Moderator: Laurie MacDiarmid, St. Norbert College (WI)

Chair: Sawyer Halbrook, Louisiana Tech University (LA)

Christine Garten, St. Norbert (WI): "College Blood Will Out: Cultural Racism and Democracy in Charles Brockden Brown's *Wieland*"

Jenna Prince, St. Norbert College (WI): "The Divine Rake: God's Seduction of Theodore Wieland in Charles Brockden Brown's *Wieland*"

Bridgette Flasch, St. Norbert College (WI): "Scared to Death? Societal Fear in Poe's *The Fall of the House of Usher* and *The Masque of the Red Death*"

H5. American & World Literature **Fri. 4:15-5:30** **Grwy Blrm E**

Moderator: Lori Muntz, Iowa Wesleyan College (IA)

Chair: Jesse Snavlin, Metropolitan State College of Denver (CO)

Hannah Stewart, Wayland Baptist University (TX): "Alias Grace: 'Marked' at Birth"

Sheila Madonia, Park University (MO): "From The Wasteland, To the Lighthouse and Through the Plague: A Journey of Hope"

Andrew Moser, Alumni Epsilon (CO): "The Layers of Deconstruction in Grant Morrison's *Animal Man*"

Chad Armstrong, Northeastern State University (OK): "Neil Gaiman created Timothy Hunter: Harry Potter is not Plagiarism"

H6. Creative Nonfiction: Memory **Fri. 4:15-5:30** **Grwy Blrm F**

Moderator: Leslie A. Crabtree, North Central University (MN)

Chair: Sarah Wright, University of Indianapolis (IN)

Sara Tedde, St. Vincent College (PA): "Writing the Family"

Jennifer Takacs, St. Vincent College (PA): "A Reel Collection"

Chansi Long, Baker University (KS): "The Townwide Welcome Mat Heist"

Ashley Sims, Baker University (KS): "Changing the Cups"

Brenda De Leon, Texas A&M University (TX): "An Important Conversation"

H7. Creative Nonfiction: Directions **Fri. 4:15-5:30** **Grwy Blrm G**

Moderator: Ami Comeford, Dixie State College (UT)

Chair: Damon McKinney, Southern Arkansas University (AR)

Katherine Klein, Cedarville University (OH): "Five Angles of Displacement"

Sonja Palmer, Lee University (TN): "This is Where I Am"

T. Renee Davidson, Western Kentucky University (TN): "In Another Life"

Christopher Fields, Pikeville College (KY): "Sleeping Well"

Gary Thomas Smith, Pikeville College (KY): "Everything Put Together"

H8. Original Fiction: Spirit **Fri. 4:15-5:30** **Grwy Blrm H**

Moderator: Felicia Steele, College of New Jersey (NJ)

Chair: Megan L. Smith, Pikeville College (KY)

Phillip Craig Ratliff, Pikeville College (KY): "PRAISE (excerpt)"

Cheryl Jones-Lane, Harris Stowe State University (MO): "Tape Measure, Recording Tape, and Bible"

Sarah Pawlak, California State University Pomona (CA): "The Damned"

Christopher A. Foote, Lee University (TN): "My Will Be Done"

Scott Kieffer, College of New Jersey (MN): "Angel"

Alex Witkowski, College of New Jersey (NJ): "Two Souls Tied"

H9. Original Poetry: Close to Home **Fri. 4:15-5:30** **Grwy Blrm I**

Moderator: Gary Dop, North Central University (MN)

Chair: Patricia Jones, University of Missouri Columbia (MO)

Joe Mayers, Rockhurst University (MO): "Seeking Familiarity: Four Poems"

Brittini Traynor, Alumni Epsilon (UT): "The People Who Made Me"

Amanda Utzman, Southern Utah University (UT): "Bridging (You and I)"

Aspen Amanda Hougen, Montana State University (MT): "Universal Horror and Other Family Heirlooms"

Ashley Beck, Northwestern College (MN): "We Are So Tired of Meaning Nothing"

Alyssa DeCaulp, St. Edward's University (TX): "A Study on the Functions of Memory"

H10. Creative Nonfiction: Life Stories **Fri. 4:15-5:30** **Grwy Blrm J**

Moderator: Carolyn Ayers, St. Mary's University (MN)

Chair: Catherine Guarente, Santa Clara University (CA)

Travis R. Babb, University of Idaho (ID): "Just Hunt"

Sarah Greeley, University of Idaho (ID): "Leo the Lion"

Nicole Bartow, West Virginia University (WV): "Play It Cool"

Maria Goodson, West Virginia University (WV): "Epiphany from the Princess"

Amy Orr, Northwest Missouri State University (MO): "I Forced Myself to Cry"

Barry Grass, Northwest Missouri State University (MO): "You Take It With You"

H11. Critical Theory: Post Modernism **Fri. 4:15-5:30** **Skyway A**

Moderator: Brenda Thomas, La Grange College (GA)

Chair: Scott Rodgers, Alvernia University (PA)

Kathleen Napolitano, College of New Jersey (NJ): "Apocalypse Now and Then: Postmodernism in Kurt Vonnegut's Works"

Cetera Altepeter, Concordia College (MN): "A Psyche Deconstructed: Keats's 'Ode on Melancholy'"

Michelle Mercure, Bridgewater State College (RI): "The Pleasure of a Lacanian Reading"

Diana Ireland Stanley, Dixie State College (UT): "The Hyperreal Existence: A Postmodernist Interpretation of Brett in *The Sun Also Rises*"

H12. Panel: Evolution of Pastoral Poetry Fri. 4:15-5:30 Minnehaha

Moderator: Traci Thomas-Card, University of Wisconsin Eau Claire (WI)

Panelists:

Jillian Phillips, University of Wisconsin Eau Claire (WI)

Katherine Freund, University of Wisconsin Eau Claire (WI)

Ashlyn Wells, University of Wisconsin Eau Claire (WI)

Description:

Panelists will lead a discussion on the evolution of the pastoral form. Panelists will provide a brief history of the genre back to Theocritus and then examine the form used by William Wordsworth and John Keats. Panelists and audience members will examine modern pastoral examples from Phillip Levine, Babette Deutsch, and others. Has the pastoral form truly evolved, or is modern poetry using a pastoral element which should be reclassified as a yet unnamed genre?

H13. Panel: Reflecting on Tutoring Fri. 4:15-5:30 Mirage

Moderator: Richard Ruppel, Chapman University (CA)

Panelists:

Tiffany Monroe, Chapman University (CA)

Shannon Bartlett, Chapman University (CA)

Jill Raftery, Chapman University (CA)

Allison Ritto, Chapman University (CA)

Description:

Chapman University graduate students will discuss both their research and experiences as English tutors in a roundtable discussion. Topics include, but are not limited to, finding a job, online tutoring, peer review, community college versus university tutoring, and the writing center's relationship with students.

H 14: Miscellaneous Fri. 4:15-5:30 Skyway B

This time and room are reserved for an additional session, if needed. Please see notices in the Registration area for presentations scheduled at this time.

PRESIDENT'S RECEPTION Fri. 5:30-6:30 Regency

A Special Invitation for **Chapter Sponsors, Alumni, and Faculty** Guests Robert Crafton, President, Sigma Tau Delta International English Honor Society, invites you to the President's Reception:

*beverages, hors d'oeuvres, lively conversation,
and music by The Covelli Jazz Three.*

NEIL GAIMAN

Fri. 8:00-9:00 Nicollet Grand Blrm

General Session

Neil Gaiman's poetry, prose, comics, music lyrics, drama, journalism, and film have garnered numerous awards, including the 2009 John Newbery Medal Award. Some of Gaiman's works include *Anansi Boys*, *The Wolves in the Walls*, *The Sandman*, *A Study in Emerald*, *Smoke and Mirrors*, *Coraline*, *American Gods*, *Stardust*, *Neverwhere*, and *Good Omens* (with Terry Pratchett).

Neil Gaiman book signing to follow presentation.

Open Microphone Fri. 9:30-11:00 pm Nicollet A

Emcee: Gary Dop

Bring your creative work and read it to a most appreciative audience.

Saturday March 28th

Session J: Saturday 28 March 8:00-9:15am

J1. British: *Sir Gawain & Courtly Love* Sat. 8:00-9:15 Grwy Blrm A

Moderator: Kevin Stemmler, Clarion University (PA)

Chair: Lauren Rocchino, Alvernia University (PA)

Catherine Bailey, Auburn University Montgomery (AL): "*Sir Gawain and the Green Knight* and the Illusion of Romance"

Caitlin L. Johnson, Northwestern College (MN): "An Examination of the Portrayal of Chivalry and Courtly Love in *Sir Gawain and the Green Knight*"

Laura Linneman, Thomas More College (OH): "A Historical Reading of *Sir Gawain and the Green Knight*"

Tiffany Monroe, Chapman University (CA): "Mistress of the Court: Marie de France Redefines Courtly Love"

J2. British: *Unfortunate Women* Sat. 8:00-9:15 Grwy Blrm B

Moderator: Shannon Schroeder, Southern Arkansas University (AR)

Chair: Kristopher Adam Speirs, Metropolitan State College of Denver (CO)

Christine Taylor, Samford University (AL): "The Destruction of a Goddess"

Sarah B. Williams, University of New Mexico (NM): "'Beautiful Exceedingly': Romantic and Christian Influences on George MacDonald's Grandmother in *The Princess and Curdie*"

Jessica Wedemeyer, Northern Illinois University (IL): "Religious Duty in *Antigone* and *The Cenci*"

Ashley Menchise, College of New Jersey (NJ): "Losing is Hard to Master: Loss in Elizabeth Bishop's 'One Art' and Queen Elizabeth's 'On Monsieur's Departure'"

J3. British: Shakespeare's Heroes & Fools Sat. 8:00-9:15 Grwy Blrm C

Moderator: Dana Aspinall, Alma College (MI)

Chair: Daniel Hardy, University of Wisconsin Eau Claire (WI)

Connie M. Woxland, University of Wisconsin La Crosse (WI): "Shakespeare's Villainous Hero: Good and Evil Within *The Tempest* and the Misinterpreted Magician Prospero"

Sowmya Narayanan, Chatham University (PA): "Feste the Jest: Traversing Class Boundaries"

Paul Mahan, University of Central Oklahoma (OK): "Just Who Is This Puck Person Anyway?"

Roselynn Buffa, Northwest Missouri State University (MO): "The *Real* Role-Reversal of Shakespearean Fools"

J4. American Literature: Southern Gothic Sat. 8:00-9:15 Grwy Blrm D

Moderator: John Laflin, Dakota State University (SD)

Chair: Nanda Nunnally-Sparks, Missouri Southern State University (MO)

Rachel Pietka, Chapman University (CA): "'Good Country People' Unmasked: Hulga's Journey to Salvation"

Sara N. Fluharty, Missouri Southern State University (MO): "Miss Emily the Misfit: Considering Setting in Faulkner's 'A Rose for Emily'"

Jenna Halse, Dakota State University (SD): "Temptation and the Grotesque: Religion in 'Good Country People' and 'The Ugliest Pilgrim'"

Paul Utterback, St. Norbert College (WI): "Silence Amidst Racial Injustice: Complacent Catholicism in O'Connor"

J5. American Literature: Wallace Stevens Sat. 8:00-9:15 Grwy Blrm E

Moderator: Peter Scholl, Luther College (IA)

Chair: Brenda De Leon, Texas A&M International University (TX)

Audrey Faltin, Northwest Missouri State University (MO): "Imagination at Work: Wallace Stevens and 'The Idea of Order at Key West'"

William Leland Haynes, Texas A&M International University (TX): "A Framing of 'Thirteen Ways of Looking at a Blackbird'"

Alicia Cranford, Auburn University (AL): "Divided Over the Poet's Social Function: Critical Responses to the Poetry and Prose of Wallace Stevens"

J6. American Literature: Characters Sat. 8:00-9:15 Grwy Blrm F

Moderator: Jayne Higgins, Rockford College (IL)

Chair: Ashley J. Brossart, Minot State University (ND)

Aimee Watson, Southern Arkansas University (AR): "Edna Pontellier: An Awakening of the Heart"

Sarah Tatko, St. Leo University (FL): "Identity of Isabel Archer in *The Portrait of a Lady*"

Hannah Palmer, Samford University (AL): "Frederick Winterbourne: A Study"

J7. World Literature: Middle Eastern Sat. 8:00-9:15 Grwy Blrm G

Moderator: Diane Steinberg, College of New Jersey (NJ)

Chair: Heidi Zull, University of Dubuque (IA)

Lauren Heimlich, College of New Jersey (NJ): "Fighting Despair with Despair:

The Humanization of Immoral Action in *Real Time* and *Wild Thorns*"

Megan Campfield, University of Wisconsin La Crosse (WI): "Traveling Stories of Bestiality and Pakistan Nationalism"

Lateshia Beachum, Columbia College (SC): "Good Women, Bad Women, and Mercy in *The Thousand and One Nights*"

Amanda Utzman, Southern Utah University (UT): "Beyond"

J8. Original Poetry: Others Sat. 8:00-9:15 Grwy Blrm H

Moderator: Susan N. Maher, University of Nebraska Omaha (NE)

Chair: Owen E. Romo, North Dakota State University (ND)

Kathleen Turner, Northern Illinois University (IL): "Women and the Art of Attraction"

Marjorie Laydon, Pennsylvania State Altoona (PA): "Her Perfume: A Series of Personae"

Lindy Smart, Mercyhurst College (PA): "She is Underneath"

Sara Tedde, St. Vincent College (PA): "Ways to Make Love"

Janey Strobel, University of Nebraska Omaha (NE): "Love Songs"

Grant Swanson, North Central College (NE): "Verses on the Death of a Good Christian"

J9. Original Poetry: Passages Sat. 8:00-9:15 Grwy Blrm I

Moderator: Jane Wood, Park University (MO)

Chair: Danielle White, Franklin Pierce University (NH)

Kimberly Anderson, St. Norbert College (WI): "Chronology"

Candice Weddington, University of Rio Grande (OH): "17-20"

Joseph W. Pierce, Franklin Pierce University (NH): "Last Minutes"

Monica Rentfrow, University of Nebraska Lincoln (NE): "Rethinking Repair"

Cody Kucker, Fitchburg State (MA): "Experiences with Distance"

Bridgetta Jasmine Parker, Pennsylvania State University (PA): "A Philosophy in Six Parts"

J10. Creative Nonfiction: Places Sat. 8:00-9:15 Grwy Blrm J

Moderator: Larry Dennis, Clarion University (PA)

Chair: Travis R. Babb, University of Idaho Moscow (ID)

Stephanie Hicks, Northwestern College (MN): "Everybody's Hometown"

Kailey Burtnett, University of Pittsburgh Greensburg (PA): "Friends Cove: A Realistic Perspective"

Stefanie Torres, St. Edward's University (TX): "South King Road"

Sarah Yakima, Clarion University (PA): "Multiple Boundaries, One World"

Sarah Stark, Ouachita Baptist University (AR): "A Glimpse of Heaven Through African Eyes: Reflections on a Zimbabwean Soup Kitchen"

J11. Creative Nonfiction: Water Works Sat. 8:00-9:15 Skyway A
Moderator: Gwendolyn Morgan, Montana State University Bozeman (MT)
Chair: William S. Terrell III, Morehouse College (GA)
Marcy Colalillo, Fitchburg State College (MA): "Swimming in the Agam"
Tara Denise Burchett, Pikeville College (KY): "Riding the Wave"
Taylor Moorman, Montana State University Bozeman (MT): "Washing Away"
Lacey Allen, College of Notre Dame of Maryland (MD): "Pink Coats, Fireworks
and Tears"
William D. Tripp, Southern Arkansas University (AR): "Running in Water"

J12. Original Fiction: Emotional Events Sat. 8:00-9:15 Skyway B
Moderator: Ralph Speer, Northwest Nazarene University (ID)
Chair: Allison Schisler, Northwest Nazarene University (ID)
Azra Halilovic, Gustavus Adolphus College (MN): "A Superior Decision"
Abby Travis, Gustavus Adolphus College (MN): "Hope for a Whisper"
Maria Goodson, West Virginia University (WV): "The Argument"
Shannon Bartlett, Chapman University (CA): "Cold Shoulder"
Laurie Burgemeister, Northwest Nazarene University (IN): "Reflection of a Life
Unlived"
Michelle Skelton, Pikeville College (KY): "Last Chance"

J13. Panel: Reflecting on Service: Sat. 8:00-9:15 Minnehaha
Children's and Young Adults' Writing Contests

Moderator: Traci Thomas-Card, University of Wisconsin Eau Claire (WI)

Panelists:

Stephanie Schiefelbein, University of Wisconsin Eau Claire (WI)

Christina Huber, University of Wisconsin Eau Claire (WI)

Jessica Soine, University of Wisconsin Eau Claire (WI)

Sarah Moran, University of Wisconsin Eau Claire (WI)

Kristin Chang, University of Wisconsin Eau Claire (WI)

Description:

The Theta Zeta Chapter of Sigma Tau Delta at University of Wisconsin Eau Claire has held annual writing contests for the students of Wisconsin schools since 1998. The Theta Zeta panelists will explain the practical aspects of each step of running these writing contests: creating contest letters and guidelines and mailing lists, sending calls for papers, reading and judging submissions, creating winners' booklets, and hosting winners' ceremonies. Sample submission forms, guidelines, booklets, and programs will be provided. The audience will be invited to contribute their experiences and questions.

J14. Panel: This Once and Magic Life: Sat. 8:00-9:15 Mirage Student Memoirs

Moderator: Dixil Rodriguez, SKD, Tarrant County Community College (TX)

Panelists:

Rachel Spurgin, SKD, Northeast Alabama Community College (AL)

Jeff Spradlin, SKD, Tarrant County Community College (TX)

Marcella Clark, SKD, Tarrant County Community College (TX)

Stacie Sonneveld, SKD, Tarrant County Community College (TX)

Christopher Hooie, SKD, Calhoun Community College (AL)

Description:

Students and faculty will discuss the benefits of capturing our once and magic lives on paper. Sigma Kappa Delta students will share and discuss narrative examples. All convention attendees are welcome.

GARY DOP Sat. 9:30-10:45 Nicollet A

Writing Workshop

“Keeping the Muse from Slipping into a Revision ~~coma~~ Coma”: In this interactive workshop, we explore the fickle relationship between the creative burst that triggers the work and the often methodic revision process. We examine common misperceptions about revision and techniques for fueling creative energy throughout revision. We’ll laugh a lot, and if the muse shows up, we’ll learn something. Plan to leave this workshop slightly disturbed and relishing the process of developing a draft into a publishable piece.

Session K: Saturday 28 March 9:30-10:45am

K1. British Literature: Drama Sat. 9:30-10:45 Grwy Blrm A

Faculty Moderator: Diane Steinberg, College of New Jersey (NJ)

Chair: Laurea DeAnna Ellis, Columbia College (SC)

Susan Rauch, Texas State University San Marcos (TX): “Apocalypse Y1K: What a Revelation!”

Julie Mathers, Montana State University Bozeman (MT): “Comedy in the Corpus Christi Cycle: A Reflection of Medieval Society”

Kathleen Hynes, College of New Jersey (NJ): “The Carnavalesque in Medieval Drama: A World Turned ‘Inside Out’”

K2. British: Marriage ala Victorian Mode Sat. 9:30-10:45 Grwy Blrm B

Faculty Moderator: Gloria J. Hochstein, University of Wisconsin Eau Claire (WI)

Chair: Jessica Soine, University of Wisconsin Eau Claire (WI)

Meghan Davy, University of St. Thomas (MN): "Is Marriage a Sham?

Homoeroticism and Victorian Deception in *Dorian Gray*"

Stephanie Schiefelbein, University of Wisconsin Eau Claire (WI): "Reformed

Marriage in *The Heavenly Twins*"

Jessica Garcia, University of Alabama (AL): "Fairy Tale for the Fairly Adult Female"

Aryn Gieger, University of Alabama (AL): "Male Domination in 'My Last Duchess' and 'Porphyria's Lover'"

K3. British Literature: Connections Sat. 9:30-10:45 Grwy Blrm C

Moderator: Sheri Midkiff, William Baptist College (AR)

Chair: Bec Koshak, University of Wisconsin Eau Claire (WI)

Brianna Lichtenauer, Baker University (KS): "The Role of Art in *The Matisse Stories*"

Mia Starmer, Marist College (NY): "An Impressionist Comparison: How Joseph Conrad, Claude Monet and Claude Debussy Share Similar Impressionist Styles in their Work"

Jane Showalter, Chatham University (PA): "The Nature of Greatness: Servitude, Identity & Landscape in *The Remains of the Day*"

Jennifer Pruitt, University of Central Oklahoma (OK): "Samwise Gamgee as Hero of *The Lord of the Rings*"

K4. British Literature: Three Writers Sat. 9:30-10:45 Grwy Blrm D

Moderator: Delores Stephens, Morehouse College (GA)

Chair: Sarah Heckman, Alvernia University (PA)

Leanna L.Gurley, Northeastern State University (OK): "'We' Identity: Collective Consciousness in Doris Lessing's *Briefing for a Descent into Hell*"

Anne Risch, Oklahoma Baptist University (OK): "Jungian Imperialism: 'The Other Boat' Reveals Forster's Opinions of Imperialism"

Megan Holt, Tulane University (LA): "The Sun Rises and Sets in the West: Anxiety and Imperialism in E.M. Forster's *A Passage to India*"

Rebecca McGowan, College of New Jersey (NJ): "Loosed Out of Hell to Speak of Horrors: An Examination of Savagery in *Heart of Darkness*"

K5. American Literature: Faulkner Sat. 9:30-10:45 Grwy Blrm E

Faculty Moderator: Lori Muntz, Iowa Wesleyan University (IA)

Chair: Eileen Ryan, Western Kentucky University (KY)

G. Ryan Spain, University of Alabama (AL): "Darl Bundren: Sight and Madness"

Richard W. Gardner, Auburn University Montgomery (AL): "The Bundrens: Saving the World, But Not Themselves"

Benjamin Lowery, Western Kentucky University (CT): "A Fish, a Horse, and a Nothing: Reactions to Addie's Death in Faulkner's *As I Lay Dying*"

K6. Creative Nonfiction: Work Writing Sat. 9:30-10:45 Grwy Blrm F

Faculty Moderator: Christina Riley Brown, MercyHurst College (PA)

Chair: Melissa Pomeroy, Mercyhurst College (PA)

Amy A. Gracia, Bridgewater State College (MA): "Melville's Prose and Prophecy: Insight from 'Bartleby Scrivener: A Story of Wall Street'"

AnnaMaria Wing, Nazareth College Rochester (NY): "The Banality of Terrorism in the Workplace: Self-esteem and the Menial Employees"

Eric Delio, Mercyhurst College (PA): "My Working Plan for the End of the World"

Stephen Heiner, Rockhurst University (MO): "Rules is Rules: What I Learned from Getting Kicked out of Officer Candidates School"

Laura Izzo, College of Notre Dame (MD): "My Love Affair With Authority"

K7. Creative Nonfiction: Observations Sat. 9:30-10:45 Grwy Blrm G

Faculty Moderator: Doris Walters, Missouri Southern State College (MO)

Chair: Eleanor M. Ramlow, Alma College (MI)

Chelsea Lane Campbell, Southern Utah University (UT): "The Issue of Tissue"

Brittni Traynor, Alumni Epsilon (UT): "Unmade Bed"

Rachel Pietka, Chapman University (CA): "The Elements of Manipulation"

Danielle M. LeFevre, Chapman University (CA): "100 Cents"

Jenny W. Lau, Chapman University (CA): "A Principal Beating and Other Short Stories"

K8. Original Fiction: Inanimate Objects Sat. 9:30-10:45 Grwy Blrm H

Faculty Moderator: Sidney Watson, Oklahoma Baptist University (OK)

Chair: Nanda Nunnally-Sparks, Missouri Southern State University (MO)

Brian Urtz, Azusa Pacific University (CA): "Revolver"

Mark Reagan, Metropolitan State College Denver (CO): "Lithium Jukebox"

Paige Burton, Cottey College (MO): "The Black Line"

Grace Ohene Asante, Cottey College (MO): "Diary of May 28th, 1988"

Elizabeth Blumer, Indiana University of Pennsylvania (PA): "Lines"

K9. Original Fiction: Nature Calls Sat. 9:30-10:45 Grwy Blrm I

Faculty Moderator: Wendy Weaver, Mount Mary College (WI)

Chair: Shane Sevier, Franklin Pierce University (NH)

Tracey Swan, Chapman University (CA): "Cicada Wind"

Ashley D. Saari, Franklin Pierce University (NH): "Falling Snow"

Kristina Brooks, Alumni Epsilon Chapter (OK): "Chasing Storms"

Chris Strand, University of Sioux Falls (SD): "What the Earth Heard"

Chansi Long, Baker University (KS): "Locked in Nature"

K10. Critical Theory: Feminism

Sat. 9:30-10:45 Grwy Blrm J

Faculty Moderator: David Woody Wilson, West Virginia State University (WV)

Chair: Paul Mitchell, University of Oklahoma (OK)

Meredith Seagraves, University of Central Oklahoma (OK): "The Wife of Bath as an Antifeminist"

Hallie Elizabeth Rulnick, Chapman University (CA): "A Look at Vampirism and Femininity in 'The Lady of the House of Love'"

Danielle Fisher, Furman University (SC): "Proto-Feminist Impulses in Amelia Lanyer's 'Eve's Apology'"

Bryan L. Jones, Northeastern State University (OK): "Curse of the Woolf-man: How Dialectical Thinking can Cure Professor Lupin"

**K11. Panel: Science Fiction as Literature: Sat. 9:30-10:45 Minnehaha
A Discussion of the Merits of Teaching Science Fiction**

Moderator: Christopher D. Genre, Southeastern Louisiana University (LA)

Panelists:

Sherri Craig, Southeastern Louisiana University (LA)

Rebecca Murry, Southeastern Louisiana University (LA)

George Dorrill, Southeastern Louisiana University (LA)

Dustin Cotton, Southeastern Louisiana University (LA)

Leigh Rourks, Southeastern Louisiana University (LA)

Description: This panel will encourage a lively discussion or even debate about the benefits of teaching science fiction in the university or high school. We will discuss the biases against science fiction and the reluctance of some to consider it acceptable subject matter for teaching. Panelists will discuss the history of the genre, major authors, literary qualities, and the benefits of teaching SF. Panelists will present sample syllabi, class assignments, discussion ideas, and essays. Panel members include SF enthusiasts and an instructor currently teaching a university course on science fiction.

K12. British Literature: 19th C Discussions Sat. 9:30-10:45 Skyway A

Faculty Moderator: Ralph Speer, Northwest Nazarene University (ID)

Chair: Joanne Eckert, Northwest Nazarene University (ID)

Laura Maddaford, St. Edward's University (TX): "Tennyson's and Morris's Moral Views on Guinevere's Infamous Act of Adultery"

Parker Barnwell, Furman University (SC): "The Beetle"

Damaris Saenz, La Sierra University (CA): "Wilkie Collins Assassinates the House Angel"

Kaitlyn Zafonte, Marist College (NY): "'Art is not simple truth but complex beauty': Aestheticism and Theory in Oscar Wilde's *The Picture of Dorian Gray*"

K13. Creative Nonfiction: Lessons **Sat. 9:30-10:45** **Skyway B**

Faculty Moderator: Roger Stanley, Union University (TN)

Chair: Lauren Tiner, Plymouth State University (NH)

Katlyn Valerio, Cottey College (MO): "The Decimation of a Faith"

Jaclyn Kaissling, Oklahoma Christian University (OK): "Don't Eat Chicken in Your Underwear"

Justine Greve, Baker University (KS): "Archaeology"

Caroline Lampinen, Western Michigan University (MI): "A Short History"

MIKE PERRY

Sat. 11:00-12:00

Nicollet Grand Blrm

General Session

Humorist, writer, musician--Mike Perry is the author of the bestselling memoir *Population 485: Meeting Your Neighbors One Siren at a Time*, numerous essays including the collection *Off Main Street*, and, most recently, *Truck: A Love Story*. After getting his nursing degree from the University of Wisconsin Eau Claire, Perry wrote while working as a truck driver, cowboy, proofreader, music roadie, forklift operator, therapy aide, firefighter, EMT, and, lately, chicken wrangler.

Mike Perry book signing to follow presentation.

Sigma Kappa Delta **Sat. 1:00-2:00**

Skyway A

Faculty Sponsor Meeting

Session L: Saturday 28 March 2:00-3:15pm

L1. Panel: Graduate School 101: **Sat. 2:00-3:15** **Grwy Blrm A**

Looking for, Applying to, and Surviving Graduate School

Moderator: Kevin Stemmler, Clarion University (PA)

Panelists:

Anwar Fairley, Southern Arkansas University (AR)

Christopher L. Wike, Clarion University (PA)

Sarah Yakima, Clarion University (PA)

Melissa Masone, Alvernia University (PA)

Description: Panelists will focus on pragmatic ways of approaching graduate studies. Discussion topics will include, but are not limited to, searching for graduate schools, determining a desired degree, the application process, what to expect in graduate school, and what to do now to prepare oneself for graduate studies in the English discipline.

L2. British: Shakespeare **Sat. 2:00-3:15** **Grwy Blrm B**

Faculty Moderator: Alcyone Scott, Midland Lutheran College (NE)

Chair: Ashley D. Saari, Franklin Pierce University (NH)

Matthew Miller, Oklahoma Christian University (OK): "Hotspur and Machiavelli: the Death of Chivalry"

Marlene Kvitrud, Gustavus Adolphus College (MN): "Helena the Love Guru Disregards Her Own Wisdom"

Amy R. Schoenig, Northern Kentucky University (KY): "The Body and *Titus Andronicus*"

Katherine Wilson, University of North Texas (TX): "Racism in Shakespeare"

L3. British: Victorian Faith & Power **Sat. 2:00-3:15** **Grwy Blrm C**

Faculty Moderator: Samantha Scott, Fort Hays State University (KS)

Chair: Lauren Heimlich, College of New Jersey (NJ)

Kate Novotny, University of Minnesota Morris (MN): "Agency, Autobiography, and the Puzzle of Maggie Tulliver"

Katie Edwards, Fort Hays State University (KS): "Off with his Head: The Symbolic Overthrow of Traditional Power in Stoker's *Dracula*"

Shannon Selander, Azusa Pacific University (CA): "The True Threat of Vampirism: *Dracula* and Gender Role Inversion"

Hollyann Crum, William Baptist College (AZ): "Robert Browning: A Hypocritical Faith"

L4. American: Post Modern America **Sat. 2:00-3:15** **Grwy Blrm D**

Faculty Moderator: Pam Shaffer, Fort Hays State University (KS)

Chair: Crystal Baker, Southern Arkansas University (AR)

Rebecca Caroline Johnson, Lee University (TN): "Fear and Paranoia: The Effects of Media and Technology in DeLillo's *White Noise*"

Shaughnessy Conley, Metropolitan State College of Denver (CO): "It's Just Down the Hall: Postmodern Gothic in Stephen King's *1408*"

James Stewart, University of North Texas (TX): "Desire Under the Canopy: Machines and Subjectivity in O'Brien's *The Things They Carried*"

Parker White, University of Alabama (AL): "Caroline in *Coraline*"

L5. Film: Cinematic Mix **Sat. 2:00-3:15** **Grwy Blrm E**

Faculty Moderator: Diana Scholl, Luther College (IA)

Chair: Micah Dean Hicks, Southern Arkansas University (AR)

Catherine Docken, Luther College (IA): "Guys Gone Girls Gone Wild"

Rachael Tully, University of Central Oklahoma (OK): "Adapting Shakespeare's *Romeo and Juliet*: Luhrmann's Resurrection of Star-Crossed Lovers"

Brittany Horlbeck, Columbia College (SC): "Why Beauty Ends Up With a Beast: A Feminist Reading of Disney's *Beauty and the Beast*"

Denise Jansen, Ohio Northern University (OH): "Our Inferiority to Citi Bank's Protection of Identity"

Kerri Gabelhouse, Creighton University (NE): "South Park the Community"

L6. Original Poetry: Shapes & Motion Sat. 2:00-3:15 Grwy Blrm F

Faculty Moderator: Gary Dop, North Central University (MN)

Chair: Katherine Freund, University of Wisconsin Eau Claire (WI)

Kenneth Marrott, Dixie State College (UT): "Lines with Edges"

Debrenee Adkisson, Kansas State University (KS): "The Dance I Used to Do"

Rachel Grammer, Northwestern College (MN): "My Corner of the World"

Kurtis King, Baker University (KS): "Dull Scissors"

Maia Elgin, Luther College (IA): "Hooks and Lines"

L7. Original Poetry: Reflections Sat. 2:00-3:15 Grwy Blrm G

Faculty Moderator: Linda J. Sumption, Eastern New Mexico University (NM)

Chair: Clayton Carnahan, Missouri Southern State University (MO)

Taylor Walling, Oklahoma Christian University (OK): "The Lie I Am A Poet"

Corey D. Clawson, Utah State University (UT): "Reflections: Life in Art, Art in Life"

Brittany A. Blake, Westfield State College (MA): "Reflections on My Life, Love and Times"

Danielle Rice, Westfield State College (MA): "Broken Moments"

April C. Honaker, Louisiana Tech University (LA): "Talking About What Matters: Reflections of a Louisiana Native"

Victoria Brooks, University of Sioux Falls (SD): "True Colors"

L8. Original Fiction: Separation Sat. 2:00-3:15 Grwy Blrm H

Faculty Moderator: Traci Thomas-Card, University of Wisconsin Eau Claire (WI)

Chair: Kristin Chang, University of Wisconsin Eau Claire (WI)

Tania C. Richter, University of Wisconsin Eau Claire (WI): "Divergence"

Christine Garten, St. Norbert College (WI): "The Separation of the Heart and the Head"

Andrew Todd, Thomas More College (KY): "The Replacements"

Caitlin Murphree, Samford University (AL): "The Things That Separate"

L9. Creative Nonfiction: Miscellany Sat. 2:00-3:15 Grwy Blrm I

Faculty Moderator: Felicia Steele, College of New Jersey (NJ)

Chair: Sarah Moran, University of Wisconsin Eau Claire (WI)

Alexandra Walston, Fort Hays State University (KS): "Best of the Worst: The Bottom 10 Christmas Songs"

Sharon Waltz, Cedarville University (OH): "On Cankles"

Stacey Pastorella, College of New Jersey (NJ): "From Trenton State to Trenton Thunder"

Lindsay Ashton, College of New Jersey (NJ): "Mr. Pillowhead"

L10. Creative Nonfiction: Habits Sat. 2:00-3:15 Grwy Blrm J

Faculty Moderator: Michel Aaij, Auburn University Montgomery (AL)

Chair: Chad Chumley, Iowa Wesleyan College (IA)

Isabeau V. Dasho, Stephens College (MO): "Lying, Still"

Stephanie Reynolds, Auburn University Montgomery (AL): "Pledging Allegiance"

Lindsey Thomas, College of Notre Dame (MD): "Indulgence"

Donna Gregory, Alumni Epsilon (OK): "The Temple of Donna and House Upon a Rock"

L11. Critical Theory: Queer & World Theory Sat. 2:00-3:15 Skyway B

Faculty Moderator: Simone J. Billings, Santa Clara University (CA)

Chair: Catherine Guarente, Santa Clara University (CA)

Miranda Gray, Chatham University (PA): "A Queer Theory Reading of Tim O'Brien's 'The Things They Carried': Weightless Gender Identities"

Talley V. Kayser, Furman University (SC): "Blood, Borders, and the Bush: An Ecocritical Reading"

Mackenzie Hufty, Oklahoma Baptist University (OK): "Categorizing a Culture"

Jill Raftery, Chapman University (CA): "Removing the Veil, Lifting the Silence: The Freedom of Simplicity in Persepolis and Haroun and the Sea of Stories"

L12. Original Drama: Family & Friends Sat. 2:00-3:15 Minnehaha

Faculty Moderator: Dixil Rodriguez, Tarrant County Community College (TX)

Chair: Jillian Phillips, University of Wisconsin Eau Claire (WI)

Robert Deignan, Western Kentucky University (KT): "Bald-Faced Lies"

Allison Strube, Cottey College (MO): "Battle on Both Fronts"

Katie Nicholson, Stephens College (MO): "Malignant or Benign?"

Lateshia Beachum, Columbia College (SC): "Rosalyn and Spades"

Ashley DeArmond, Olivet Nazarene University (IL): "Unheard"

L13. Original Fiction: This and That Sat. 2:00-3:15 Mirage

Faculty Moderator: Larry Dennis, Clarion University (PA)

Chair: Justine Berry, Plymouth State University (NH)

Zechariah Brewer, Southeastern Louisiana University (LA): "Writing On the Wall"

Sheri L. Gaches, University of Central Oklahoma (OK): "Getting Ready for Another Wedding"

Mike Hunter, Fitchburg State College (MA): "Prologue"

Justin Neill, Oklahoma Christian University (OK): "Excerpts from 'Post'"

Meghan Davy, University of St. Thomas (MN): "Letter from the Layover"

MIKE PERRY

Sat. 3:30-4:45

Regency

Continuing Conversation

Co-Chairs: Patricia Jones, University of Missouri Columbia (MO) and Katie St. Martin, Keene State College (NH)

An informal presentation by Mike Perry which encourages discussion and questions.

Session M: Saturday 28 March 3:30-4:45

M1. British: Shakespeare's Drama Sat. 3:30-4:45 Grwy Blrm A

Faculty Moderator: Beth DeMeo, Alvernia University (PA)

Chair: Rebecca Wasser, Alvernia University (PA)

Justine Greve, Baker University (KS): "'I Can See A Church By Daylight': Eyes, Ears and Misinterpreted Perceptions in *Much Ado About Nothing* and *King Lear*"

Sarah Lysaker, Northwestern College (MN): "The Three Globes"

Bess Myers, College of New Jersey (NJ): "King Lear and *The Winter's Tale*: A Study of Justice Through Genre"

M2. American Literature: Multicultural Sat. 3:30-4:45 Grwy Blrm B

Faculty Moderator: Kyoko Amano, University of Indianapolis (IN)

Chair: Corey D. Clawson, Utah State University (UT)

Katherine Kipp, Union University (TN): "The Chang Family Discovers 'Typical America'"

Ashleigh Hess, Oklahoma Christian University (OK): "*Preservando Cultura en Corridos Mexicanos: Machismo, Modernismo, e Identidad Chicana*"

Sara Wright, University of Indianapolis (IN): "The New Negro in Zora Neale Hurston's *Their Eyes Were Watching God*"

Katie Gowell, Fitchburg State College (MA): "Lost Progress in Charles W. Chesnutt's *Marrow of Tradition*"

M3. American Literature: Poetry Sat. 3:30-4:45 Grwy Blrm C

Faculty Moderator: Roger Stanley, Union University (TN)

Chair: Hollyann Crum, Williams Baptist College (AR)

Joseph F. DiPasqua II, Mercyhurst College (PA): "I Howl the Body Electric: Walt Whitman, Allen, Ginsberg and the Death of the Democratic Ideal"

Mechelle A. Rouchon, Southeastern Louisiana University (LA): "Thankful: Fathers in Retrospect"

Jessica Hill, Oklahoma Baptist University (OK): "The Enduring Significance of *Spoon River Anthology*"

M4. World Literature: Africa **Sat. 3:30-4:45** **Grwy Blrm D**

Faculty Moderator: Jayne Higgins, Rockford College (IL)

Chair: Megan L. Smith, Pikeville College (KY)

Stacey Pastorella, College of New Jersey (NJ): "Messages without Words:
Representations of Suffering in the Poetry of Ingrid de Kok"

Gary Thomas Smith, Pikeville College (KY): "Beneath the Cloud of Obscurity"

Leigh Sullan, Olivet Nazarene University (IL): "From Escapism to Sensitization in
J.M. Coetzee's *Disgrace*"

M5. Original Poetry: Biographical **Sat. 3:30-4:45** **Grwy Blrm E**

Faculty Moderator: Traci Thomas-Card, University of Wisconsin Eau Claire (WI)

Chair: Tania C. Richter, University of Wisconsin Eau Claire (WI)

Jane Showalter, Chatham University (PN): "Steal Us From Ourselves"

Jessica Soine, University of Wisconsin Eau Claire (WI): "Legacy"

T. Renee Davidson, Western Kentucky University (TN): "Selections from *The
Expatriate*"

Amanda C. Hosey, University of Montevallo (AL): "Carrying the Past From Here
to There"

Dani R. Limos, Alumni Epsilon (WA): "Purity"

Parker Barnwell, Furman University (SC): "Catalytic Lines"

Trent Gurney, Alumni Epsilon (UT): "Men with Dirty Mouths"

M6. Creative Nonfiction: Popular Culture **Sat. 3:30-4:45** **Grwy Blrm F**

Faculty Moderator: Elisa Beshero-Bondar, Univ. of Pittsburgh Greensburg (PA)

Chair: Lauren Coleman, Louisiana Tech University (LA)

Hannah Holmes, Ouachita Baptist University (AR): "How Not to Get Famous on
YouTube"

Tamara Moellenberg, Azusa Pacific (CA): "Klingons to Copernicus"

Jennifer Lynn Barge, Missouri Southern State University (MO): "No Noobs
Allowed"

Lindsay Meredith Kokai, Northern Kentucky University (KT): "SLAP! Bracelets"

Lisa Louie, Azusa Pacific University (CA): "Prelude and Fugue"

M7. Creative Nonfiction: Reflections **Sat. 3:30-4:45** **Grwy Blrm G**

Faculty Moderator: Summer Dickinson, York College (NE)

Chair: Laura Heffner, Alvernia University (PA)

Tyler Groff, Indiana University East (IN): "But the Lens Cap Was On: A Reflection
on Belief"

Arianne Choquette, Westfield State College (MA): "A Reflection on Human
Resilience"

Brigette Stevenson, California Lutheran University (CA): "Verschuttete
Erinnerungen"

Andrew Martin, Westfield State College (MA): "A Little Over Two Hours"

Mark Kelley, Marquette University (MI): "The Professional"

M8. Creative Nonfiction: Home **Sat. 3:30-4:45** **Grwy Blrm H**

Faculty Moderator: Christopher Flynn, St. Edward's University (TX)

Chair: Aimee Watson, Southern Arkansas University (AR)

Siri Carlson, Luther College (IA): "Inheritance"

Jennifer Veilleux, Western Carolina University (NC): "Becoming My Mother"

Catherine Docken, Luther College (IA): "Duty Bound"

Kelly Retz, Northern Illinois University (IL): "A Letter Home to Marisa"

Lydia Baker-Crawley, Iowa Wesleyan College (IA): "American Pie"

M9. Miscellaneous Session **Sat. 3:30-4:45** **Grwy Blrm I**

This time and room are reserved for an additional session, if needed. Please see notices in the Registration area for presentations scheduled at this time.

PRE-BANQUET SOCIAL

Sat. 5:15-6:30

Nicollet Promenade

Converse, mingle, and enjoy the music of

The Brian Handeland Jazztet.

(cash bar, complementary soda)

AWARDS BANQUET

Sat. 6:30-9:00

Nicollet Grand Ballroom



Acknowledgements

English Department of the University of Wisconsin Eau Claire
for their general support

Sigma Tau Delta Central Office at Northern Illinois University:
Deb Seyler, Elfrida Gabriel, and Karen Larsen

Steven Barclay Agency for donating the name badges

Readers and Reviewers

Bob Crafton, Slippery Rock University (PA)
Sarah Dangelantonio, Franklin Pierce College (NH)
Larry Dennis, Clarion University (PA) (emeritus)
Marybeth DeMeo, Alvernia College (PA)
Monty Ernst, University of Wisconsin Eau Claire (WI)
Carrie Fitzpatrick, Alvernia College (PA)
Chris Flynn, St. Edward's University (TX)
Jason B. Jones, Central Connecticut State University (CT)
Patricia Jones, University of Missouri Columbia (MO)
John C. Kerrigan, Rockhurst University (MO)
Emily Bright Krusack, University of Wisconsin Eau Claire (WI)
Matthew C. Nelson, Francis Marion University (SC)
Laurie MacDiarmid, St. Norbert College (WI)
Jarrod Patterson, Alabama A&M University (AL)
Frederick Poss, University of Wisconsin Eau Claire (WI)
Cathy Rex, University of Wisconsin Eau Claire (WI)
Dorothy Robbins, Louisiana Tech University (LA)
Peter School, Luther College (IA)
Shannin Schroeder, Southern Arkansas University (AR)
Erica Scott, Slippery Rock University (PA)
Jenny Shaddock, University of Wisconsin Eau Claire (WI)
Felicia Steele, College of New Jersey (NJ)
Kevin Stemmler, Clarion University (PA)
Jan Stirm, University of Wisconsin Eau Claire (WI)
Bruce Taylor, University of Wisconsin Eau Claire (WI) (emeritus)
Traci Thomas-Card, University of Wisconsin Eau Claire (WI)
Stephanie Turner, University of Wisconsin Eau Claire (WI)

Host Chapter

Theta Zeta of the University of Wisconsin Eau Claire
(Sponsors Gloria J. Hochstein, Traci Thomas Card, and Cathy Rex)
With onsite assistance from Epsilon Theta of Southern Arkansas University
(Sponsor Shannin Schroeder)

Index of Participants

A

Aaij, Michel (Auburn University Montgomery AL): B5, L10
Adams, Evan (Winthrop University SC): B4
Adkisson, Debrenee (Kansas State University KS): H2, K6
Alimonda, Nikki (Long Island University, NY): E1
Allen, Lacey (College of Notre Dame MD): J11
Allen-Leventhal, Judith (College of Southern Maryland MD): D3, E3
Altepeter, Cetera (Concordia College MN): H11
Amano, Kyoko (University of Indianapolis IN): D4, M2
Anderson, Hillary (Oklahoma Baptist University OK): A8, D4
Anderson, Katie (Gustavus Adolphus College MN): F10
Anderson, Kimberly (St. Norbert College WI): F3, J9
Andrews, Michael (Assumption College MA): B8
Armstrong, Chad (Northeastern State University OK): H5
Arnoldussen, Amie (St. Norbert College WI): A12
Asante, Grace Ohene (Cottey College MO): K8
Ashton, Lindsay (College of New Jersey NJ): D11, L9
Aspinall, Dana (Alma College MI): E4, J3
Auvil, Elise (Indiana University of Pennsylvania PA): C2
Ayers, Carolyn (St. Mary's University MN): G6, H10

B

Babb, Travis R. (University of Idaho Moscow ID): H10, J10
Bailey, Catherine (Auburn University Montgomery AL): J1
Baker, Crystal (Southern Arkansas University AR): F12, L4
Baker, Daniel Robert (Azusa Pacific University CA): G8
Baker-Crawley, Lydia (Iowa Wesleyan College IA): M8
Barge, Jennifer Lynn (Missouri Southern State University MO): M6
Barker, Kirsten L. (University of Idaho ID): D10
Barnett, Catherine (Taylor University IL): C3, F10
Barnwell, Parker (Furman University SC): K12, M5
Bartlett, Shannon (Chapman University CA): J12
Bartlett, Shannon Chapman University (CA): H13
Bartley, Nicole (Slippery Rock University PA): F8
Bartow, Nicole (West Virginia University WV): H10
Beachum, Lateshia (Columbia College SC): J7, L12
Bealer, Ariel E. (Ouachita Baptist University AR): F7
Beauchamp, Lauren (Alvernia University PA): H3
Bebb, Angela (Oklahoma Christian University OK): E2
Beck, Amanda (Westfield State College MA): G10
Beck, Ashley (Northwestern College MN): B7, H9
Becker, Cathy (Northwest Nazarene University ID): C11
Bedsole, Anna (Samford University AL): G8
Belmonte, Heather (McKendree University IL): B9, C14
Bennett, Kristin (College of New Jersey NJ): D1
Berry, Justine (Plymouth State University NH): G6, L13
Beshero-Bondar, Elisa (University of Pittsburgh Greensburg PA): D14, M6
Bieler, Lauren (Elon University NC): E6, G7
Billings, Simone J. (Santa Clara University CA): L11
Bivin, Shawn (Western Kentucky University KY): C4
Blake, Brittany A. (Westfield State College MA): B2, G10, L7
Blazek, Kelliann (University of Wisconsin La Crosse WI): E9
Blumer, Elizabeth (Indiana University of Pennsylvania PA): F7, K8
Bobango, Jessica (Northwest Nazarene University ID): C11
Bolich, Cecilia (St. Leo University FL): B1

Boll, Jessica Rose (University of Rio Grande OH): E5
 Bonner, Jessica (Samford University AL): E4
 Boston, Taylor (Oklahoma Christian University OK): C10
 Botsford, Kathryn M. (St. Norbert College WI): E8, F5
 Bougie, Matt (St. Norbert College WI): G5
 Bourgeois, John P. (Louisiana Tech University LA): E8
 Bramson, Lindsey (Northwest Nazarene University ID): C11
 Brandeberry, Lauren (University of Central Oklahoma OK): C14
 Brandt, Amelia (Park University MO): F4
 Braun, William (Huntington University IN): E3
 Brennan, Meaghan (Westfield State College MA): E8
 Brewer, Zechariah (Southeastern Louisiana University LA): L13
 Brinkley, Amy S. (Lee University TN): A11
 Brooks, Kristina (Alumni Epsilon OK): F6, K9
 Brooks, Susan (Minot State University ND): C3
 Brooks, Victoria (University of Sioux Falls SD): B8, L7
 Brossart, Ashley J. (Minot State University ND): F11, J6
 Brown, Christina Riley (MercyHurst College PA): A7, K6
 Brown, Christopher (California State Polytechnic University Pomona CA): A3
 Brown, Christopher P. (Pennsylvania State University Altoona PA): G9
 Brown, Jessica (Olivet Nazarene University IL): D3
 Bruno, Enrico (College of New Jersey NJ): C5
 Buffa, Roselynn (Northwest Missouri State University MO): J3
 Bulis, Heather A. (Westfield State College KY): B10
 Burchett, Tara Denise (Pikeville College KY): J11
 Burdett, Hayley (West Virginia University WV): D6, H3
 Burgemeister, Laurie (Northwest Nazarene University ID): C11, G4, J12
 Burtnett, Kailey (University of Pittsburgh at Greensburg PA): A4, J10
 Burton, Paige (Cottey College MO): K8
 Byrd, Sheila (SKD Calhoun Community College AL): B12, F1

C

Calcaben, Maria (Texas State University TX): A6
 Camp, Carmon (Harris-Stowe State University MO): F7
 Campbell, Chelsea Lane (Southern Utah University UT): E5, K7
 Campbell, Grant (University of Nebraska at Kearney NE): G1
 Campfield, Megan (University of Wisconsin-La Crosse WI): J7
 Cappleman, Casey (Blue Mountain College MS): G9
 Carlson, Siri (Luther College IA): M8
 Carnahan, Clayton (Missouri Southern State University MO): L7
 Carter, Mallory (Plymouth State University NH): F8
 Chabitnoy, Abigail (St. Vincent College PA): B8, E6
 Chadwick, Jill M. (SKD Calhoun Community College AL): B12
 Chang, Kristin (University of Wisconsin Eau Claire WI): F5, J13, L8
 Chenoweth, Sarah (Pittsburg State University KS): G2
 Chism, Brandon K. (Oklahoma Christian University OK): C6
 Choquette, Arianne (Westfield State College MA): M7
 Chumley, Chad (Iowa Wesleyan College IA): B3, L10
 Cieri, Lorry Gail (University of Central Oklahoma OK): A1
 Clark, J.L. (University of Alabama AL): A6
 Clark, Marcella (SKD Tarrant County Community College TX): J14
 Clark, Melanie (Alumni Epsilon KY): B9, E6
 Clark, Tara Cloud (Missouri Southern State University, MO): A2
 Clarke, Jennifer (Lamar University Beaumont, TX): G6
 Clawson, Corey D. (Utah State University UT): E10, L7, M2
 Clewell, Susan (Ohio Northern University OH): G4
 Clift, Megan Kathleen (University of San Diego CA): G2

Colalillo, Marcy (Fitchburg State College MA): F5, J11
Coleman, Lauren (Louisiana Tech University LA): H1, M6
Coley, Carolyn (Samford University AL): C14
Comeford, Ami (Dixie State College UT): A5, H7
Conley, Shaughnessy (Metropolitan State College of Denver CO): E8, L4
Cornelissen, Sarah (St. Norbert College WI): C7
Cotton, Dustin (Southeastern Louisiana University LA): K11
Crabtree, Leslie A. (North Central University MN): G1, M6
Crafton, Robert (Slippery Rock University PA): B2
Craig, Sherri (Southeastern Louisiana University LA): A11, D5, K11
Cranford, Alicia (Auburn University Montgomery AL): J5
Crawford, Laura (Fitchburg State College MA): B5
Cross, Dr. Randy (SKD Calhoun Community College AL): B12
Cross, Hali (Northwest Nazarene University ID): C11
Cross, Randy (SKD Calhoun Community College AL): F1
Crull, Caley (Winthrop University SC): G5
Crum, Hollyann (Williams Baptist College AR): L3, M3
Cuenin, Elizabeth (Samford University AL): D14
Cullen, Sean (Alvernia University PA): E9

D

Dahl, Angela (California Polytech State University Pomona CA): D9
Daiss, Rebekah (Armstrong Atlantic State University GA): A12
Dallman, Alicia Ann (Nebraska Wesleyan University NE): B3, G10
Dangelantonio, Sarah (Franklin Pierce University NH): B9, F11
Darby, Megan (University of Nebraska at Omaha NE): C7, G3
Dasho, Isabeau V. (Stephens College MO): L10
Davidson, T. Renee (Western Kentucky University TN): H7, M5
Davy, Meghan (University of St. Thomas MN): K2, L13
De Leon, Brenda (Texas A&M International University TX): H6, J5
DeArmond, Ashley (Olivet Nazarene University IL): L12, E10
DeCaulp, Alyssa (St. Edward's University TX): H9
Deignan, Robert (Western Kentucky University KT): B8, L12
Dejarlais, Nicole (North Dakota State University ND): D12
Delio, Eric (Mercyhurst College PA): K6
DeMeo, Beth (Alvernia University PA): G13, H2, M1
Dennis, Larry (Clarion University PA): A3, J10, L13
Dessaso, Deborah A. (Alumni Epsilon DC): A11
Dickinson, Summer (York College NE): H1, M7
Diehl, Rebecca (Pennsylvania State University Altoona PA): E6
Diethorn, Aubrey Elizabeth (St. Vincent College PA): C13
DiPaolo, Amanda (Springfield College MA): A1
DiPasqua II, Joseph F. (Mercyhurst College PA): M3
do Vale, Michelle (Westfield State College MA): G10
Do, Van (University of Texas-Austin TX): B9, F5
Docken, Catherine (Luther College IA): L5, M8
Dockery, Brooke (Oklahoma Baptist University OK): D6, F4
Dockter, Randi (Minot State University ND): B4
Donnelli, Emily (Park University MO): A1, D6
Dop, Gary (North Central University MN): C, D10, H9, L6, K
Dorrill, George (Southeastern Louisiana University LA): K11
Dumbach, David (Lincoln University MO): D4
Dunnahoe, Rachel (Ouachita Baptist University AR): G9
Durant, Tim (Metropolitan State College of Denver CO): A9, F14
Dutro, Nicholas (Ohio Northern University OH): C10
Dykema, Meghan (Western Michigan University MI): B5

E

Easley, Esther (Harris Stowe State University MO): C6
Eckert, Joanne (Northwest Nazarene University, ID): D14, K12
Ecks, Brandon (California Polytech State University Pomona CA): B5
Edwards, Catherine F. "Katie" (Fort Hays State University KS): L3
Edwards, Jasmine (Alma College MI): D11, F6
Edwards, Megan (Thomas More College KY): A8
Eibl, Leslie (Clarion University of Pennsylvania PA): C12
Eisenback, Jordan (Lee University TN): C4
Eitreim, Kristin (North Dakota State University ND): D12
Elder, Alaina J. (Andrews University MI): A3
Elgin, Maia (Luther College IA): L6
Elias, Yolanda Fay (Angelo State University TX): A12
Ellis, Laurea DeAnna (Columbia College SC): E3, K1
Ellspermann, Jennifer (Loyola Marymount University CA): D8
Emling, Jennifer (St. Vincent College PA): B1
Engel, Adam (College of New Jersey NJ): D5, F6
English, Angela Rae (University of Missouri-St. Louis MO): B2, G12
Engsberg, Meghan (St. Norbert College WI): F3
Epps, Katrina (College of Notre Dame MD): A7

F

Fairley, Anwar (Southern Arkansas University AR): D9, L1
Faltin, Audrey (Northwest Missouri State University MO): D5, J5
Ferguson, Justin (Andrews University MO): D1
Fields, Christopher (Eastern Kentucky University KY): H7
Fillinger, George (California Polytech State University Pomona CA): F8
Fine, Heather (Virginia Tech VA): C1
Fischer, Benjamin (Northwest Nazarene University ID): C11
Fisher, Danielle (Furman University SC): K10
Fisk, Margaret (Ithaca College NY): A10
Fitzpatrick, Carrie (Alvernia University PA): A2, F12
FitzSimons, Sherman R. (Southeastern Louisiana University LA): D5
Flasch, Bridgette (St. Norbert College WI): H4
Fleckenstein, Nathaniel (Northern Kentucky University IN): F9
Fluharty, Sara N. (Missouri Southern State University MO): J4
Flynn, Christopher (St. Edward's University TX): C8, G12, M8
Foote, Christopher A. (Lee University TN): H8
Fosher, Naomi (Plymouth State University NH): E8
Fox, Derek (West Virginia University NY): A6
Friedman, Katie (California State Polytechnic University Pomona CA): D10
Frost, Brittany (Olivet Nazarene University IL): B7, D9
Friend, Katherine (University of Wisconsin Eau Claire WI): B3, H12, L6
Fultz, Kayla Missouri Southern State University MO): D6
Fuqua, Vanna (Northwestern Oklahoma State University OK): A3

G

Gabelhause, Kerri (Creighton University NE): L5
Gabrys, Kristina (Andrews University OR): A6
Gaches, Sheri L. (University of Central Oklahoma OK): L13
Gaddis, Audra M. (Iowa Wesleyan College IA): E12, F10
Garcia, Jessica (University of Alabama AL): K2
Gardner, Richard W. (Auburn University Montgomery AL): K5
Garman, Aida (Alvernia University PA): F12, H1
Garofalo, Devin Marie (University of Nebraska Omaha NE): C7, G3
Garten, Christine (St. Norbert College WI): H4, L8
Genre, Christopher D. (Southeastern Louisiana University LA): K11

Gieger, Aryn (University of Alabama AL): K2
Gilland, Megan (Northwest Missouri State University MO): C3, F11
Goodson, Maria (West Virginia University WV): H10, J12
Gowell, Katie (Fitchburg State College MA): M2
Gracia, Amy A. (Bridgewater State College MA): K6
Graffunder, Linnea (Luther College IA): E12
Grammer, Rachel (Northwestern College MN): L6
Graser Thulin, Heidi (Northwestern College MN): E12
Grass, Barry (Northwest Missouri State University MO): H10
Graves, Jessica Anita (Alumni Epsilon SC): F2
Gray Miranda (Chatham University PA): L11
Greeley, Sarah (University of Idaho ID): H10
Gregory, Donna (Alumni Epsilon OK): B, L10
Greve, Justine (Baker University KS): K13, M1
Grevesen, Kristen (College of New Jersey NJ): E5
Gribbins, Evan (Western Kentucky University KY): F4, G9
Griffith, Krista (University of St. Thomas MN): C4
Grim, Sarah (Indiana University of Pennsylvania PA): G10
Groff, Tyler (Indiana University East IN): M7
Groote, James (University of Sioux Falls SD): D9
Guarente, Catherine (Santa Clara University CA): H10, L11
Guerrero, Eva Marie (Texas A&M University Corpus Christi TX): F10
Gurley, Leanna L. (Northeastern State University OK): K4
Gurney, Trent (Alumni Epsilon UT): D9, M5

H

Haag, Mandi (St. Norbert College WI): C7
Hackett Natasha, (York College NE): A6, B9
Halbrook, Sawyer (Louisiana Tech University LA): D3, E, H4
Halilovic, Azra (Gustavus Adolphus College MN): J12
Halse, Jenna (Dakota State University SD): J4
Hardy, Daniel (University of Wisconsin Eau Claire WI): J3
Harper, Meredith (University of Alabama AL): C8
Harris, Jasmine (Bowie State University MD): E11
Hartman, Jason (Pennsylvania State University Altoona PA): C7
Haynes, William Leland (Texas A&M International University TX): J5
Heckman, Sarah (Alvernia University PA): F12, G13, K4
Heffner, Laura (Alvernia University PA): G13, M7
Heider, Matthew A. (Gustavus Adolphus College MN): D7
Heimlich, Lauren (College of New Jersey NJ): J7, L3
Heiner, Stephen (Rockhurst University MO): C1, K6
Heinzl, Jeff (Furman University SC): A10
Helmick, Samantha C. (Iowa Wesleyan College IA): C10, F10
Henderson, Kayla (Southern Arkansas University AR): C10, H2
Hess, Ashleigh (Oklahoma Christian University OK): M2
Hicks, Micah Dean (Southern Arkansas University AR): A8, D6, L5
Hicks, Stephanie (Northwestern College MN): J10
Higgins, Jayne (Rockford College IL): J6, M4
Hill, Jessica (Oklahoma Baptist University OK): M3
Hill, Niccole (Bowie State University MD): E11
Hinson, Amy (Texas A&M University Corpus Christi TX): B10
Hochstein, Gloria J. (University of Wisconsin Eau Claire WI): K2
Hodges, Shea Hartmann (Morningside College IA): C9, F8
Hodnik, Gina (Northern Illinois University IL): F3
Hoefener, Allison (College of New Jersey NJ): B11
Hogan, Jenna R. (St. Vincent College PA): D1
Hoganson, Kate (Northwestern College MN): C14

Holden, Emily (St. Edward's University TX): B2
Holder, Laura (Eastern New Mexico University NM): A14
Holland, Barbara (Blue Mountain College MS): D1, G9
Hollister, Stephanie (Huntington University IN): C5
Holmes, Hannah (Ouachita Baptist University AR): A8, M6
Holt, Megan (Tulane University LA): K4
Honaker, April C. (Louisiana Tech University LA): C1, L7
Hooie, Christopher (SKD Calhoun Community College AL): J14
Horlbeck, Brittany (Columbia College SC): L5
Horton, Rachel (Texas Wesleyan University TX): F14
Hosey, Amanda C. (University of Montevallo AL): C4, M5
Hougen, Aspen Amanda (Montana State University MT): G1, H9
Huber, Christina (University of Wisconsin Eau Claire WI): B11, J13
Hufty, Mackenzie (Oklahoma Baptist University OK): L11
Huggins, Jesse (Blue Mountain College MS): G1
Hunter, Mike (Fitchburg State College MA): A9, L13
Hutabarat, Tiffany (La Sierra University CA): B10, D13, H2
Hynes, Kathleen (College of New Jersey NJ): K1

I

Illan, Lisa (Eastern New Mexico University NM): A14
Ingram, Penelope (Chapman University CA): C3
Ishman, Michael (Clarion University PA): C12, E9
Izzo, Laura (College of Notre Dame MD): K6

J

Jackson, Dustin (Dixie State College UT): A5
Jansen, Denise (Ohio Northern University OH): L5
Jenkins, Azania (Hampton University VA): F12
Jennings, Sarah-Hazel (Mercyhurst College PA): A7
Jergenson, Julia (St. Mary's University MN): G6
Johnson, Caitlin L. (Northwestern College MN): J1
Johnson, Jenna (Valparaiso University IN): E8
Johnson, Rebecca Caroline (Lee University TN): L4
Johnson, Stephanie (Bowie State University MD): A12, E11
Jones, Andrea (Northwest Missouri State University MO): F11
Jones, Bryan L. (Northeastern State University OK): K10
Jones, Patricia (University of Missouri Columbia MO): B8, F13, H9, M
Jones-Lane, Cheryl (Harris-Stowe State University MO): A6, C6, H8
Jordan, Michaela (Northwest Missouri State University MO): B10

K

Kahm, Emily S. (Rockhurst University MO): A2, D8
Kaissling, Jaclyn (Oklahoma Christian University OK): K13
Kammerer, Al (University of Nebraska Omaha NE): A6, C7
Katsounakis, Callie (Westfield State College MA): E8
Kayser, Talley V. (Furman University SC): L11
Kelley, Mark (Marquette University MI): M7
Kenzie, Dan (Western Michigan University MI): D2
Keys, Ashley N. (University of Central Oklahoma OK): E1
Khadka, Girwan (Southern Arkansas University AR): G11
Kiefer, Jennifer (Western Kentucky University KY): E7
Kieffer, Scott (College of New Jersey NJ): H8
King, A.J. (Louisiana Tech University LA): D1
King, Jamie (University of Montevallo AL): D2
King, Kurtis (Baker University KS): L6
Kipp, Katherine (Union University TN): M2
Klauss, Rachel (Lamar University TX): C2

Klein, Katherine (Cedarville University OH): H7
Kluge, Steve (University of Central Oklahoma OK): G1
Knodel, Jacob (North Dakota State University ND): D12
Koivisto, Joseph A. (University of Scranton PA): D2
Kokai, Lindsay Meredith (Northern Kentucky University KY): M6
Kolter, Jody (St. Norbert College WI): G3
Korver, William G. (Oklahoma Baptist University OK): E7
Koshak, Bec (University of Wisconsin Eau Claire WI): D7, F9, K3
Kucker, Cody (Fitchburg State College MA): D10, J9
Kunz, Amanda (Clarion University PA): C12
Kvitrud, Marlene (Gustavus Adolphus College MN): L2

L

La Rue, Sarah M. (Northern Arizona University AZ): B11, G12
Ladd, John (Mercyhurst College PA): G9
Laflin, John (Dakota State University SD): G11, J4
Lai, WeiLing (Park University MO): F5
Lamb, Mary (Azusa Pacific University CA): G4
Lampinen, Caroline (Western Michigan University MI): K13
Larson, Talisa (Mount Mary College WI): A13
Lau, Jenny W. (Chapman University CA): E10, K7
Lawton, Christopher (Franklin Pierce University NH): C3, E7
Laydon, Marjorie (Pennsylvania State University Altoona PA): G10, J8
Lee, Angela (Olivet Nazarene University IL): B7
LeFevre, Danielle M. (Chapman University CA): F8, K7
Lentz, Kendall (Winthrop University SC): D4
Lichtenauer, Brianna (Baker University KS): D6, K3
Limos, Dani R. (Alumni Epsilon WA): M5
Lindesmith, Sarah G. (Alma College MI): E4, H1
Linneman, Laura (Thomas More College OH): J1
Linstrom, John (Valparaiso University MI): D3
LoBue, Megan (University of Scranton PA): E3
Lockhart, Cory W. (University of Montevallo AL): B5
Logsdon, Alyssa (Northwestern Oklahoma State University OK): C8
Long, Chansi (Baker University KS): H6, K9
Lonsdorf, Amanda (University of Wisconsin Eau Claire WI): D7, E5
Lota, Kenneth (Tulane University LA): H3
Louie, Lisa (Azusa Pacific University CA): M6
Love, Patrick (Western Michigan University MI): D2
Lowe, Caitlynn (Huntington University IN): D8
Lowe, Michael (Iowa Wesleyan College IA): A12
Lowery, Benjamin (Western Kentucky University KY): D8, K5
Lujan, Shannon (Eastern New Mexico University NM): A14
Lysaker, Sarah (Northwestern College MN): M1

M

MacDiarmid, Laurie (St. Norbert College WI): B6, H4
Mackie, Emma (Westfield State College MA): D5
MacNeil, Cara (College of New Jersey NJ): C1, B6
Maddaford, Laura (St. Edward's University TX): K12
Madonia, Sheila (Park University MO): D6, H5
Mahan, Paul (University of Central Oklahoma OK): A9, J3
Maher, Susan N. (University of Nebraska Omaha NE): A10, J8
Malcore, Anthony (St. Norbert College WI): B11
Maratea, Jessica (Richard Stockton College NJ): A7, B7
Marlar, Priscilla (Iowa Wesleyan College IA): A12
Marrott, Kenneth (Dixie State College UT): L6

Martin, Andrew (Westfield State College MA): M7
Martinez, Roberto (Metropolitan State College of Denver CO): B5
Masone, Melissa (Alvernia University PA): E12, G13, L1
Mathers, Julie (Montana State University Bozeman MT): K1
May, Jessica (Southwestern University TX): D14
Mayers, Joe (Rockhurst University MO): D14, H9
McCarthy, Katherine (Springfield College MA): A1
McCloskey-Ahmed, Shannon (University of Central Oklahoma OK): C6
McDonough, Megan (La Sierra University CA): C13, D13
McGinty, Ryan (Gustavus Adolphus College MN): B6
McGowan, Rebecca (College of New Jersey NJ): K4
McKinney, Damon (Southern Arkansas University AR): F9, H7
McKnight, Rebecca (Western Kentucky University TN): D7
McNeese, Beverly (York College NE): D7, G8
McNeese, Tim (York College NE): B4, F8
McPhate, Christian (Midwestern State University TX): F9
Melancon, Gabrielle (Franklin Pierce University NH): B9
Melton, Sharday (Bowie State University MD): E11
Menchise, Ashley (College of New Jersey NJ): E6, J2
Mercure, Michelle (Bridgewater State College RI): H11
Meyer, Amanda (Northwest Missouri State University MO): B6
Midkiff, Sheri (William Baptist College AR): G7, K3
Miller, Amy (Clarion University PA): C12, F12
Miller, Matthew (Oklahoma Christian University OK): L2
Miller, Rebecca (Slippery Rock University PA): B2, F7
Mills, Hannah (Northern Illinois University IL): F3
Mimidas, Stella (College of New Jersey NJ): H2
Mitchell, Landon Gray (Southern Utah University UT): E5
Mitchell, Paul (University of Oklahoma OK): G8, K10
Mixon, Ashlie Rae (Southern Arkansas University AR): C10, G1
Moellenberg, Tamara (Azusa Pacific University CA): E10, M6
Monroe, Tiffany (Chapman University CA): H13, J1
Moody, Elizabeth (College of New Jersey NJ): G11
Moore, Sarah (Fairmont State University WV): E9
Moorman, Taylor (Montana State University Bozeman MT): A10, J11
Moran, Sarah (University of Wisconsin Eau Claire WI): J13, L9
Morgan, Gwendolyn (Montana State University Bozeman MT): A9, J11
Morris, Sarah (Southern Arkansas University AR): B11, G11
Moser, Andrew (Alumni Epsilon CO): H5
Mouret, Allison Julia (St. Edward's University TX): G7
Muntz, Lori (Iowa Wesleyan College IA): H5, K5
Murphree, Caitlin (Samford University AL): E3, L8
Murry, Rebecca (Southeastern Louisiana University LA): K11
Musil, Meredith (Fort Hays State University KS): G4
Myers, Bess (College of New Jersey NJ): M1

N

Napolitano, Kathleen (College of New Jersey NJ): G8, H11
Narayanan, Sowmya (Chatham University PA): J3
Neill, Justin (Oklahoma Christian University OK): L13
Nelis, Joseph (Indiana University of Pennsylvania PA): F7
Nicholson, Katie (Stephens College MO): L12
Nociolo, Julie (State University of New York Geneseo NY): C2
Noel, Amber (Lee University TN): E6
Nordmark, Vanessa (Minot State University ND): D3
Novotny, Kate (University of Minnesota Morris MN): L3
Nunnally-Sparks, Nanda (Missouri Southern State University MO): J4, K8

O

O'Leary, Magdalynn (St. Norbert College WI): B6
Odabasi, Susan (St. Norbert College WI): F3
Odland, Laura (North Dakota State University ND): D12
Ofstad, Laura (Gustavus Adolphus College MN): C5
Okonkwo, Toya Mary (Midwestern State University TX): B2, F10
Olsen, Trenton B. (Utah State University UT): G7
Orekoya, Adenike (Park University KS): B3
Orr, Amy (Northwest Missouri State University MO): H10

P

Paddick, Lauren (St. Vincent College PA): F14
Palmer, Hannah (Samford University AL): J6
Palmer, Sonja (Lee University TN): D2, H7
Parker, Bridgetta Jasmine (Pennsylvania State University PA): G9, J9
Pastorella, Stacey (College of New Jersey NJ): L9, M4
Paul, Katherine (Andrews University MI): D5
Pawlak, Sarah (California State University Pomona CA): H8
Pennington, John (St. Norbert College WI): G
Perez, Samantha (Southeastern Louisiana University LA): E1
Phillips, Jillian (University of Wisconsin Eau Claire WI): E5, H12, L12
Pier, Mary (Harris-Stowe State University MO): E1, G5
Pierce, Joseph W. (Franklin Pierce University NH): C2, J9
Pieri, Nicole (College of New Jersey NJ): B7, E6
Pietka, Rachel (Chapman University CA): J4, K7
Pippin, Elizabeth (Cottey College MO): G5
Polidoro, Kelly-Anne (Springfield College MA): F7
Polt, Faina (Alma College MI): E4, F6
Pomeroy, Melissa (Mercyhurst College PA): K6
Pooley, Aaron (Alma College MI): A12, D9
Powell, Erica M. (Slippery Rock University PA): G5
Prince, Jenna (St. Norbert College WI): H4
Prince, Michael (Metropolitan State College of Denver CO): G9
Pruitt, Jennifer (University of Central Oklahoma OK): K3
Putnam, Jennifer (LaGrange College GA): H1

R

Radosti, Adrianna (Morningside College IA): B1
Raftery, Jill (Chapman University CA): H13, L11
Raiche, Joseph (University of South Dakota SD): D10, E12
Rambsy, Kenton (Morehouse College GA): A4, B4
Ramlow, Eleanor M. (Alma College MI): E7, K7
Randall, Matt (Alumni Epsilon OK): F6
Ratliff, Phillip Craig (Pikeville College KY): G8, H8
Rauch, Susan (Texas State University San Marcos TX): B6, C1, K1
Rawlins, Ben (Oklahoma Christian University, KS): G4
Reagan, Mark (Metropolitan State College of Denver CO): K8
Redmon, Phil (Chapman University CA): C8
Reed, Nathan (Cedarville University OH): C5
Reeves, Joan (Northeast Alabama Community College AL): B12
Reiter, Paula (Mount Mary College WI): A13
Rentfrow, Monica (University of Nebraska Lincoln NE): J9
Retz, Kelly (Alumni Epsilon MN): E9, M8
Reynolds, Stephanie (Auburn University Montgomery AL): L10
Rhodes, Roy (Oklahoma Christian University OK): G2
Rice, Danielle (Westfield State College MA): L7
Rich, Thomas (Northern Michigan University MI): D8, F6

Richter, Tania C. (University of Wisconsin Eau Claire WI): L8, M5
 Rinehart, Kristen (Winthrop University SC): E4
 Risch, Anne (Oklahoma Baptist University OK): K4
 Ritto, Allison (Chapman University CA): B10, D14, H13
 Robbins, Dorothy (Louisiana Tech University LA): C1, D2
 Roberson, Michal (Blue Mountain College MS): F2
 Robeson, Jaimie (Park University MO): F2
 Rocchino, Lauren (Alvernia University PA): G13, J1
 Rodgers, Scott (Alvernia University PA): H11
 Rodriguez, Dixil (Tarrant County Community College TX): J14, L12
 Rohla, Anika (Northwestern Oklahoma State University OK): C8, G6
 Rohrbach, Kelly (Alvernia University PA): A11, G13
 Romo, Owen E. (North Dakota State University ND): B5, J8
 Ross, Kent Chapin (York College NE): E2, G3
 Rotunno, Laura (Pennsylvania State University Altoona PA): B7, G10
 Rouchon, Mechelle A. (Southeastern Louisiana University LA): M3
 Rourks, Leigh (Southeastern Louisiana University LA): K11
 Rowe, Jenny (Ohio Northern University OH): F14
 Rowley, Emily (West Virginia State University WV): A7
 Rowntree, Miriam (University of North Texas TX): A7
 Rulnick, Hallie Elizabeth (Chapman University CA): K10
 Ruppel, Richard (Chapman University CA): G2, H13
 Russo, Tami (Park University, MO): G3
 Ryan, Brenda (Northwest Missouri State University MO): D8, F13
 Ryan, Eileen (Western Kentucky University KY): K5

S

Saari, Ashley D. (Franklin Pierce University NH): K9, L2
 Saenz, Damaris (La Sierra University CA): D13, K12
 Sandberg, Julianne E. (Alumni Epsilon OH): G11
 Sara, Megan (Springfield College MA): D4
 Sarver, Michelle (University of Pittsburgh Greensburg PA): E2
 Sassi, Kelly (North Dakota State University ND): D12, F10
 Sawyer, Josie (Furman University NC): B10, C7
 Scannell, Samantha (Slippery Rock University PA): A1
 Schewe, Jessica (Olivet Nazarene University IL): B7
 Schiefelbein, Stephanie (University of Wisconsin Eau Claire WI): F9, J13, K2
 Schisler, Allison (Northwest Nazarene University ID): J12
 Schmidt, Cole (Northern Michigan University MI): A5
 Schoenig, Amy R. (Northern Kentucky University KY): L2
 Scholl, Claudia (Mount Mary College WI): A13
 Scholl, Diana (Luther College IA): E12, F7, L5
 Scholl, Peter (Luther College IA): B8, F5, J5
 Schreyer, Jessica (University of Dubuque IA): D9, F4
 Schroeder, Shannon (Southern Arkansas University AR): B11, F9, J2
 Schulze, John Conrad (University of Nebraska Lincoln NE): F2
 Scott, Alcyone (Midland Lutheran College NE): F2, L2
 Scott, Samantha (Fort Hays State University KS): C4, H3, L3
 Seagraves, Meredith (University of Central Oklahoma OK): K10
 Selander, Shannon (Azusa Pacific University CA): L3
 Selman, Samantha Cortez (Salem College NC): E4
 Sevier, Shane (Franklin Pierce University NH): K9
 Shaffer, Pam (Fort Hays State University KS): C5, G4, L4
 Shelton, Holly (Park University MO): F4
 Sherve, Margaret (Minot State University ND): C3, F3
 Showalter, Jane (Chatham University PA): K3, M5
 Sims, Ashley (Baker University KS): G8, H6

Sims, Brittany (Hampton University VA): F12
 Sink, Suzanne (Winthrop University SC): C9
 Skelton, Michelle (Pikeville College KY): J12
 Slavin, Jessica (Alvernia University PA): A8, E10
 Sleasman, MaryAnn (Indiana University of Pennsylvania PA): B10
 Smart, Lindy (Mercyhurst College PA): J8
 Smith, Gary Thomas (Pikeville College KY): H7, M4
 Smith, Jeniffer (Blue Mountain College MS): E1
 Smith, Megan L. (Pikeville College KY): H8, M4
 Snavlin, Jesse (Metropolitan State College of Denver CO): A8, B8, E, H5
 Soine, Jessica (University of Wisconsin Eau Claire WI): J13, K2, M5
 Soldan, Laura (Lincoln University MO): F7
 Soli-Holt, Louisa (Augustana College SD): F11
 Sonneveld, Stacie (Tarrant County Community College TX): J14
 Spain, G. Ryan (University of Alabama AL): E7, K5
 Speer, Ralph (Northwest Nazarene University ID): C6, J12, K12
 Speirs, Kristofer Adam (Metropolitan State College of Denver CO): A9, D11, J2
 Spradlin, Jeff (Tarrant County Community College TX): J14
 Spurgin, Rachel (Northeast Alabama Community College AL): J14
 St. Laurent, Edmund (Westfield State College MA): E2
 St. Martin, Katherine (Keene State College NH): A7, G7, M
 Staheli, Sara Katherine (Southern Utah University UT): C13, D7, G
 Stanley, Diana Ireland (Dixie State College UT): H11
 Stanley, Greg (St. Norbert College WI): D10
 Stanley, Roger (Union University TN): C9, K13, M3
 Stark, Sarah (Ouachita Baptist University AR): J10
 Starmer, Mia (Marist College NY): K3
 Starr, Elizabeth (Westfield State College MA): B10, C2
 Steele, Felicia (College of New Jersey NJ): H8, L9
 Steinberg, Diane (College of New Jersey NJ): F6, J7, K1
 Stemmler, Kevin (Clarion University PA): C12, G, J1, L1
 Stephens, Delores (Morehouse College GA): A4, E9, K4
 Stevenson, Brigette (California Lutheran University CA): M7
 Stewart, Ashleigh M. (Cedarville University OH): E2
 Stewart, Hannah (Wayland Baptist University TX): A5, G, H5
 Stewart, James (University of North Texas TX): L4
 Stoker, Courtney (Southwestern University TX): E2
 Stoutzenberger, Sarah (York College NE): F8
 Strand, Chris (University of Sioux Falls SD): K9
 Straub, Carolyn (University of San Diego CA): D10, H1
 Strobel, Janey (University of Nebraska Omaha NE): J8
 Strohschein, Kyle (St. Edward's University TX): C8
 Strube, Allison (Cottey College MO): L12
 Stuffer, Deidre (University of Pittsburgh Greensburg PA): C2, D4
 Sullan, Leigh (Olivet Nazarene University IL): C9, M4
 Summars, Emily (Cottey College MO): A8
 Sumption, Linda J. (Eastern New Mexico University NM): A14, E8, L7
 Susienka, Kristen (St. Norbert College WI): C9
 Swan, Tracey (Chapman University CA): K9
 Swanson, Grant (North Central College NE): J8
 Swarner, Goldie (University of Pittsburgh Greensburg PA): A4
 Swety, Alison (University of Scranton PA): C9, E3

T

Takacs, Jennifer (St. Vincent College PA): H6
 Tatko, Sarah (St. Leo University FL): J6
 Taylor, Christine (Samford University AL): C6, J2

Teatum, Ashley (University of Scranton PA): A2
Tedde, Sara (St. Vincent College PA): H6, J8
Teel, Christina (Blue Mountain College MS): D1
Teigland, Abby (North Central University MN): D10
Terrell III, William S. (Morehouse College GA): J11
Thomas, Bailey (Oklahoma Christian University OK): C6
Thomas, Brenda (LaGrange College GA): E7, H11
Thomas, Joel (Olivet Nazarene University IL): G6
Thomas, Lindsey (College of Notre Dame MD): L10
Thomas-Card, Traci (University of Wisconsin Eau Claire WI): H12, J13, L8, M5
Tiner, Lauren (Plymouth State University NH): F8, K13
Todd, Andrew (Thomas More College KY): F6, L8
Tonicic, Jason (College of New Jersey NJ): A10, E6
Torres, Stefanie (St. Edward's University TX): A8, J10
Tramel, Tammy (Mount Mary College WI): A13, D11
Travis, Abby (Gustavus Adolphus College MN): B6, J12
Traynor, Brittni (Alumni Epsilon UT): H9, K7
Tripp, William D. (Southern Arkansas University AR): G3, J11
Triska, Zoe (St. Edward's University TX): A2
Trotnick, Christy (Slippery Rock University PA): C13
Troyer, Stephanie (La Sierra University CA): D13, E1
Tully, Rachael (University of Central Oklahoma OK): L5
Turner, Kathleen (Northern Illinois University IL): J8

U

Urik, Ashley (Clarion University PA): C12, H3
Urtz, Brian (Azusa Pacific University CA): K8
Usasz-Keber, Rachel (University of Nebraska Kearney NE): E7
Utterback, Paul (St. Norbert College WI): E12, J4
Utzman, Amanda (Southern Utah University UT): H9, J7

V

Valerio, Katlyn (Cottey College MO): K13
Van Arsdale, Katharine (Andrews University MO): C4
Veilleux, Jennifer (Western Carolina University NC): H2, M8
Volpicelli, Robert (Ithaca College NY): A10

W

Wade, Travis Lane (Clarion University PA): D6
Wagner, Katherine A. (La Sierra University CA): A5, B1, D13
Walborn, Jamie Aline (Alumni Epsilon CO): A9, D7
Walling, Taylor (Oklahoma Christian University OK): L7
Walston, Alexandra (Fort Hays State University KS): H3, L9
Walters, Doris (Missouri Southern State College MO): D13, E6, K7
Waltz, Sharon (Cedarville University OH): L10
Wanger, Lydia M. (Oklahoma Baptist University OK): D3
Warren, Joseph (Andrews University MI): C14
Wasser, Rebecca (Alvernia University PA): M1
Watson, Aimee (Southern Arkansas University AR): J6, M8
Watson, Sidney (Oklahoma Baptist University OK): A8, C13, K8
Weaver, Wendy A. (Mount Mary College WI): A13, D11, K9
Weddington, Candice (University of Rio Grande OH): J9
Wedemeyer, Jessica (Northern Illinois University IL): J2
Weiershauser, William (Iowa Wesleyan College IA): C10
Wells, Ashlyn (University of Wisconsin Eau Claire WI): A4, G2, H12
Whalen, Angela (Chatham University PA): B1
White, Danielle (Franklin Pierce University MA): F11, J9
White, Parker (University of Alabama AL): B9, L4

Wike, Christopher L. (Clarion University PA): A3, C12, L1
Williams, Sarah B. (University of New Mexico NM): A3, J2
Willis, C. Joe (Alumni Epsilon): G12
Willis, Joseph James (Southern Utah University UT): D9
Wilson, David Woody (West Virginia State University WV): B1, E10, K10
Wilson, Katherine (University of North Texas TX): L2
Windon, Katrina (University of Alabama AL): D4
Wing, AnnaMaria (Nazareth College of Rochester NY): B4, K6
Wisniewski, Rebecca (Alvernia University PA): A2
Witkowski, Alex (College of New Jersey NJ): C5, H8
Wolfhope, Renee E. (Franklin Pierce University NH): B9, E7, F11
Wood, Jane (Park University MO): B3, E5, J9
Wood, Rebekah (Samford University AL): C14
Woods, Amanda (Lincoln University MO): F2
Woods, Brett (Baker University KS): D8
Woxland, Connie M. (University of Wisconsin La Crosse WI): J3
Wright, Elisabeth (Oklahoma Baptist University OK): C13
Wright, Sara (University of Indianapolis IN): H6, M2

Y

Yakima, Sarah (Clarion University PA): A5, G5, J10, L1
Young, Lacey (Auburn University Montgomery AL): B5, F9
Young, Lindsey (Northwestern College MN): B7

Z

Zafonte, Kaitlyn (Marist College NY): K12
Zochert, Nathan (Minot State University ND): A6
Zull, Heidi (University of Dubuque IA): A1, J7

Participate in the BetterWorldBooks Drive

Book Drives for Better Lives

The Sigma Tau Delta National Service Project



*Sign up at this Convention
and your chapter has a chance to win a gift certificate to
purchase books at betterworldbooks.com!*

For more information:

*Visit the BetterWorldBooks display table
near the registration desk on Friday, March 27th
immediately following the Business Meeting
AND on Saturday, March 28th from 9am-noon
ALSO check out: www.betterworldbooks.com*



SIGMA TAU DELTA
INTERNATIONAL ENGLISH HONOR SOCIETY

Notes

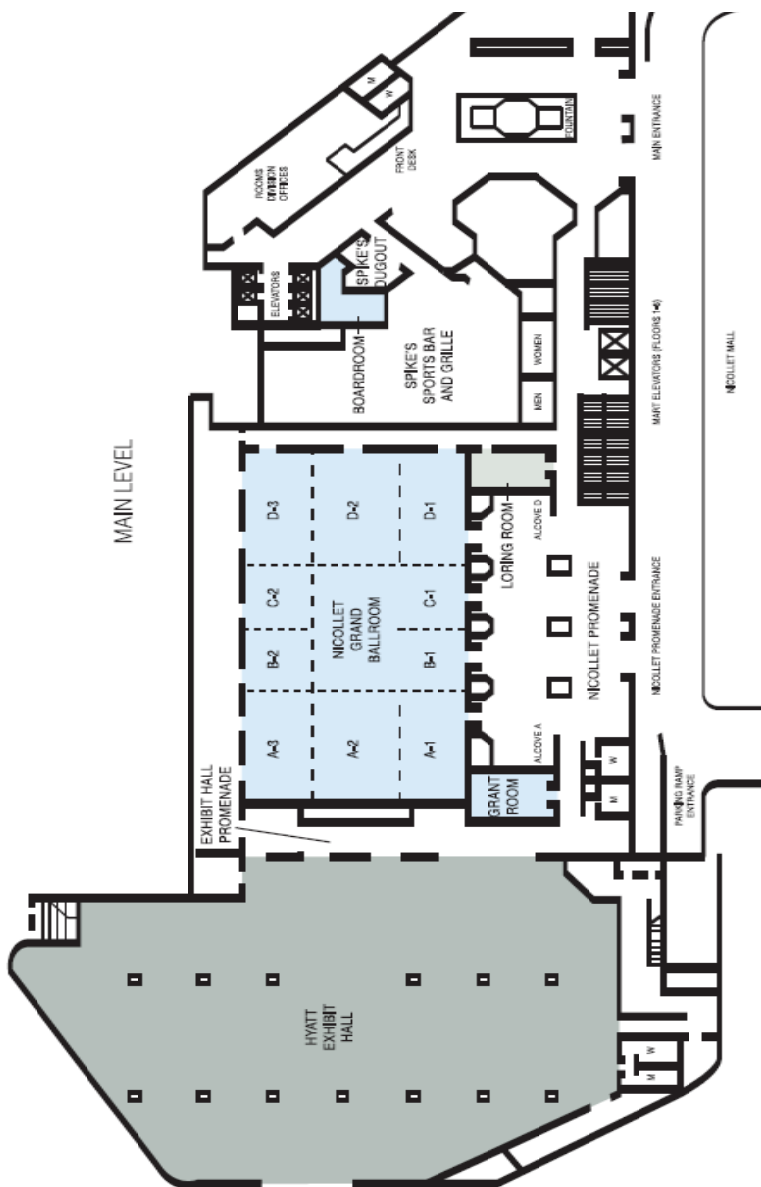


Notes



SECOND LEVEL





MAIN LEVEL

Submit Your Work!

Call for Submissions: Sigma Tau Delta Journals

**Sigma Tau Delta publications is accepting submissions
until April 30, 2009.**

What is even more exciting? Our submissions process is now fully online at <http://www.english.org/sigmatd/publications/>

Who can apply? All currently-enrolled undergraduate and graduate members of active Sigma Tau Delta chapters are invited to submit their work to *The Sigma Tau Delta Review* and *The Sigma Tau Delta Rectangle*. Chapter sponsors, faculty members, alumni (including members of the Alumni Epsilon chapter), and honorary members are not eligible to submit. Contributors who win overall awards will also receive a monetary prize as well as publication.

The Sigma Tau Delta Review is an annual journal of critical writing that publishes critical essays on literature, essays on rhetoric and composition, and essays devoted to pedagogical issues. Manuscripts should not exceed 3000 words, but exceptions may be made for essays of stellar quality. Submission by a single author for each issue of the journal should not exceed two essays. Critical essays must follow the Modern Language Association style guidelines as defined in the *MLA Handbook for Writers of Research Papers* (latest edition).

The Sigma Tau Delta Rectangle is an annual journal of creative writing that publishes poetry, fiction, and creative non-fiction. Submission by a single author for each issue of the journal should not exceed two pieces of prose and four poems. Prose manuscripts should not exceed 2,500 words.



Sigma Tau Delta
International English Honor Society
2010 International Convention

Storytellers

March 17-20, 2010

Hyatt Regency St. Louis Riverfront
St. Louis, MO, USA



Sigma Tau Delta

Executive Director William C. Johnson, Northern Illinois University (IL)

Executive Committee

President Robert Crafton, Slippery Rock University (PA)

Immediate Past President Peter Scholl, Luther College (IA)

Secretary/Treasurer Shannin Schroeder, Southern Arkansas University (AR)

Vice President/President Elect Sidney Watson, Oklahoma Baptist University

Historian Carrie Fitzpatrick, Alvernia University (PA)

Regents

Eastern Sarah Dangelantonio, Franklin Pierce College (NH)

Far Western Ralph Speer, Northwest Nazarene University (ID)

High Plains Gwendolyn Morgan, Montana State University Bozeman (MT)

Midwestern Gloria J. Hochstein, University of Wisconsin Eau Claire (WI)

Southern Roger Stanley, Union University (TN)

Southwestern Christopher Flynn, St. Edward's University (TX)

Student Advisors

Micah Hicks Southern, Arkansas University (AR)

Stephanie Schiefelbein, University of Wisconsin Eau Claire (WI)

Student Representatives/Associate Student Representatives

Eastern Region

Katherine St. Martin (SR), Keene State College (NH)

Brittany A. Blake (ASR), Westfield State College (MA)

Far Western Region

Sara Staheli (SR), Southern Utah University (UT)

Seth M. Lark (ASR), Northwest Nazarene University (ID)

High Plains Region

Jessica Snavlin (SR), Metropolitan State College of Denver (CO)

Kristofer Adam Speirs (ASR), Metropolitan State College of Denver (CO)

Midwestern Region

Patricia Jones (SR), University of Missouri Columbia (MO)

Sara Wright (ASR), University of Indianapolis (IN)

Southern Region

Sawyer Halbrook (SR), Louisiana Tech University (LA)

Lauren Coleman (ASR), Louisiana Tech University (LA)

Southwestern Region

Hannah Stewart (SR), Wayland Baptist University (TX)

Kyle Baker (ASR), University of Oklahoma (OK)